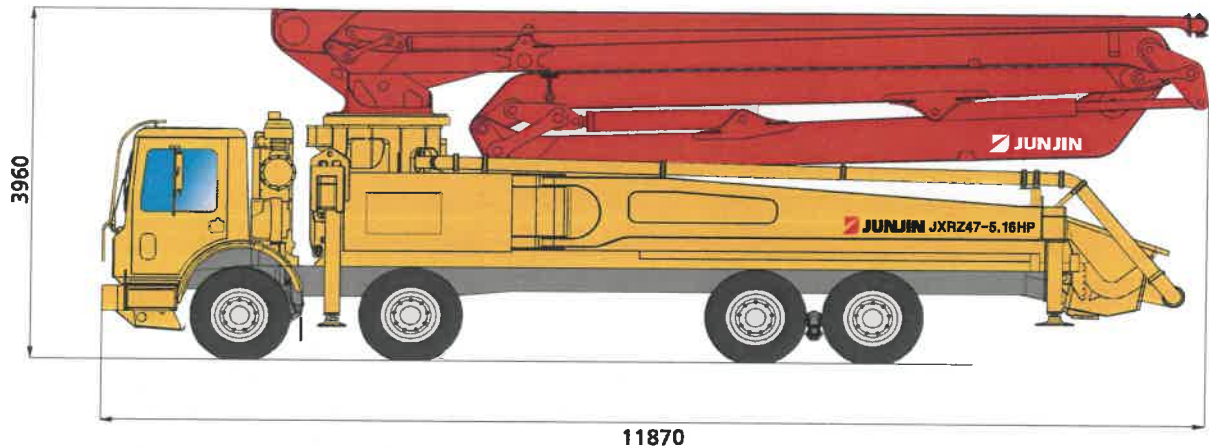


JXRZ47-5.16HP

DATA SHEET TRUCK MOUNTED BOOM PUMP



47M Truck Mounted Boom Pump with 158m³/h Output Z Type Boom Design



- * Remark : Standard specification with MACK 8x4. Dimension depends on truck specification.
- * total weight > 32ton

TECHNICAL SPECIFICATION

GENERAL SPECIFICATION		PUMP SPECIFICATION			BOOM SPECIFICATION	
Delivery Line	DN 125 / 5"	Output	Rod	158 m ³ /h	Number of booms	5 Sections
Radio remote	Proportional control		Piston	98 m ³ /h	Folding Type	R & Z TYPE
Wear plate / Ring	Tungsten Carbide	Pressure	Rod	72 Bar	Vertical Height	46.2 m
Water Pump	20 Bar		Piston	115 Bar	Horizontal Reach	41.2 m
Water Tank	500 Liter	Delivery Cylinder (Hard-chromed)	Φ230 mm		Unfolding height	11.5 m
Auto Lubrication	Hyd. grease, Hopper	Stroke Length	2100 mm		End-Hose Length	4.0 m
		S - Valve	8" X 7"		1st Section	9.2 m
		Main Oil Pump	Rexroth Hydromatic		2nd Section	7.2 m
		System Pressure	350 Bar		3rd Section	7.4 m
		Switching Type	Hydraulic		4th Section	9 m
		Hopper Capacity	600 Liter		5th Section	9.4 m

* All technical data are theoretical values and Specification are subject to change without prior notice.
 * www.junjjin.com

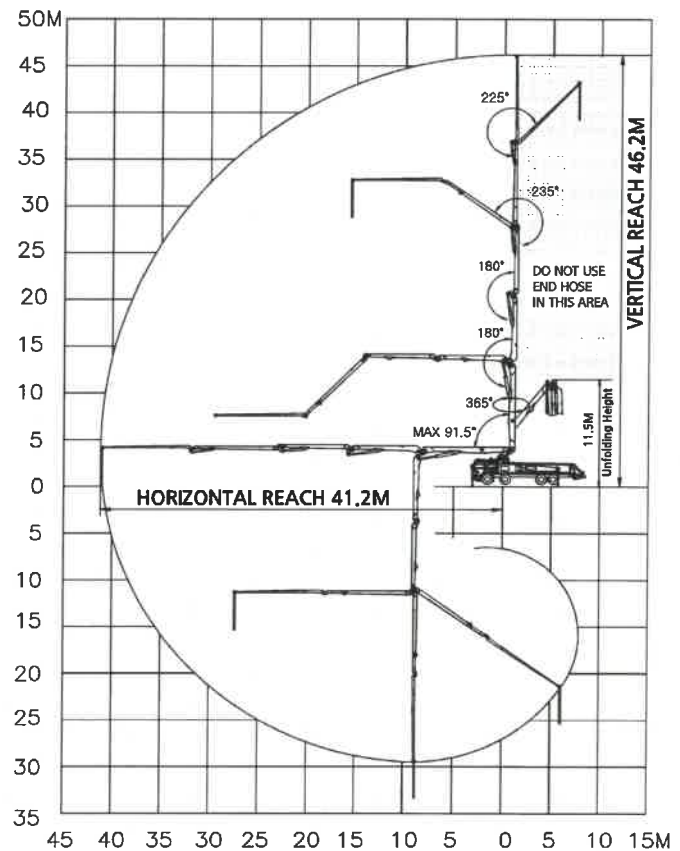
JXRZ47-5.16HP

DATA SHEET TRUCK MOUNTED BOOM PUMP

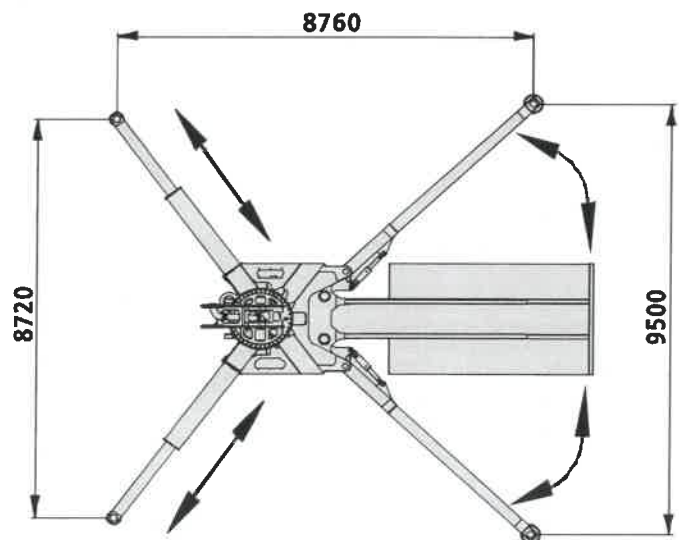


47M Truck Mounted Boom Pump with 158m³/h Output Z Type Boom Design

BOOM WORKING DIAGRAM

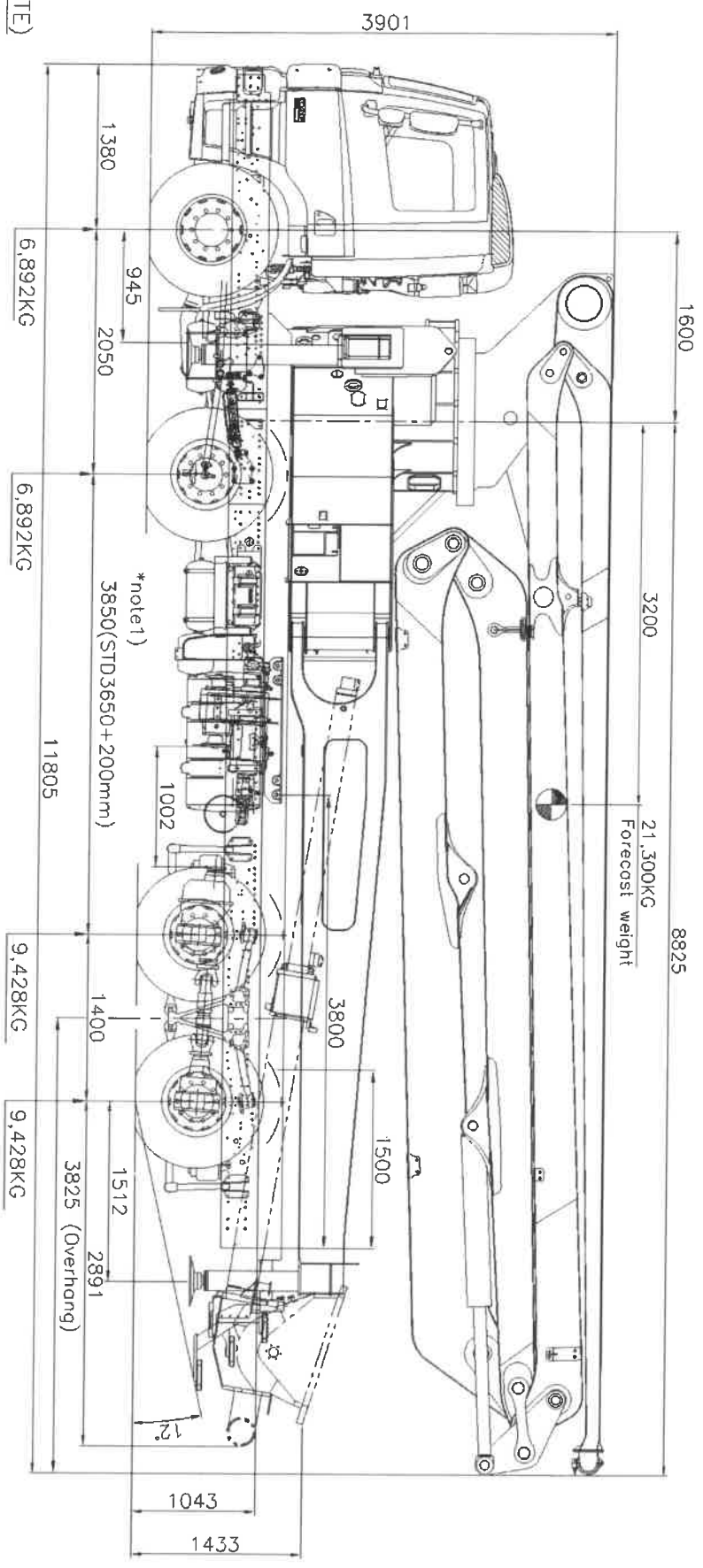


OUTRIGGER SPAN



* All technical data are theoretical values and Specification are subject to change without prior notice.
* www.junjin.com

ON-GWC		MARK	REVISIONS	REASONABLE REVISIONS	DATE	NAME	SIGN
*출고전 확인사항		1					
Test Item	Check	Note	Country				
Verification of stability	0	new model	Australia				
Weight(axle, gross)	0	axle weight					
Wedge	0	interference check					



NOTE)

1. Wheel base +200mm 연장

*TOTAL WEIGHT:

Upper unit	Truck weight	Final unit weight
With hyd. fluid	Front axle = 6,880Kg	Upper = 21,300Kg
With con. pipe	Rear axle = 3,720Kg	Truck = 10,600Kg
With end hose		M/B = 140Kg
With final point		Water = 500L
		Driver = 100kg
Total = 21,300kg	Total = 10,600kg	Total = 32,640kg

This drawing could be different against actual mounting spec because of not going over the reel mounting truck CAD file.

Before mounting, please compare this drawing with reel truck spec.

NO.	DESCRIPTION	SPECIFICATION	QTY	MATERIAL	REMARK
APPROVED BY	TITLE : APPEARANCE FOR JXRZ47-5.16HP(NEW)				
CHECKED BY	SCALE	1/1	FORMAT	A3	
DESIGNED BY	DATE	20.02.13	3RD ANGLE PROJECTION		
DRAWN BY	CUSTOMER	DAF CF85	8X4	PART NO.	
				DRAWING NO.	AUSLM47XDA01
				ITEM NO.	

JUNJIN HEAVY INDUSTRY CO. LTD.



