

FLOWJET SCORPION



flowjet
Pty Ltd

Phone 02 9457 8044
www.flowcrete.com.au

Why concrete spraying?

Concrete is fast becoming the modern and accepted method of forming, stabilizing and sealing structures such as mines, tunnels, embankments and large tanks.

The Flowjet Scorpion is an ultra compact and highly durable vehicle able to consistently deliver sprayed concrete time and time again. Its compact design allows it to excel in small tunnel cross sections and tight bends.

Why choose the Scorpion?

The Scorpion series of compact spray machines provide a rugged solution for concrete spraying up to 10 metre high ceilings. The scorpion model has two boom options depending on the size of your mine and nature of operation. Development of our nozzle system has allowed us to keep rebound to less than 10% reliably.

AD Mix Additive Pump

Concrete setting additive is an integral part of the concrete spraying process. The use of our dosage controlled peristaltic pump ensures years of reliable additive delivery. Operators can manually tune the mix as needed.

NX64 Carrier

The NX64 carrier is powered by a Mercedes OM904 High efficiency diesel engine. The 4 wheel shaft driven, centre articulated vehicle has a fully reversible drive and max 25 km/h driving speed. It is designed for use in a 3.5 x 3.5 opening and will accommodate 90 degree corners. Other standard safety features include a ROPS/FOPS canopy, Automatic fire suppression system and wet brake system with failsafe auto lock operation.

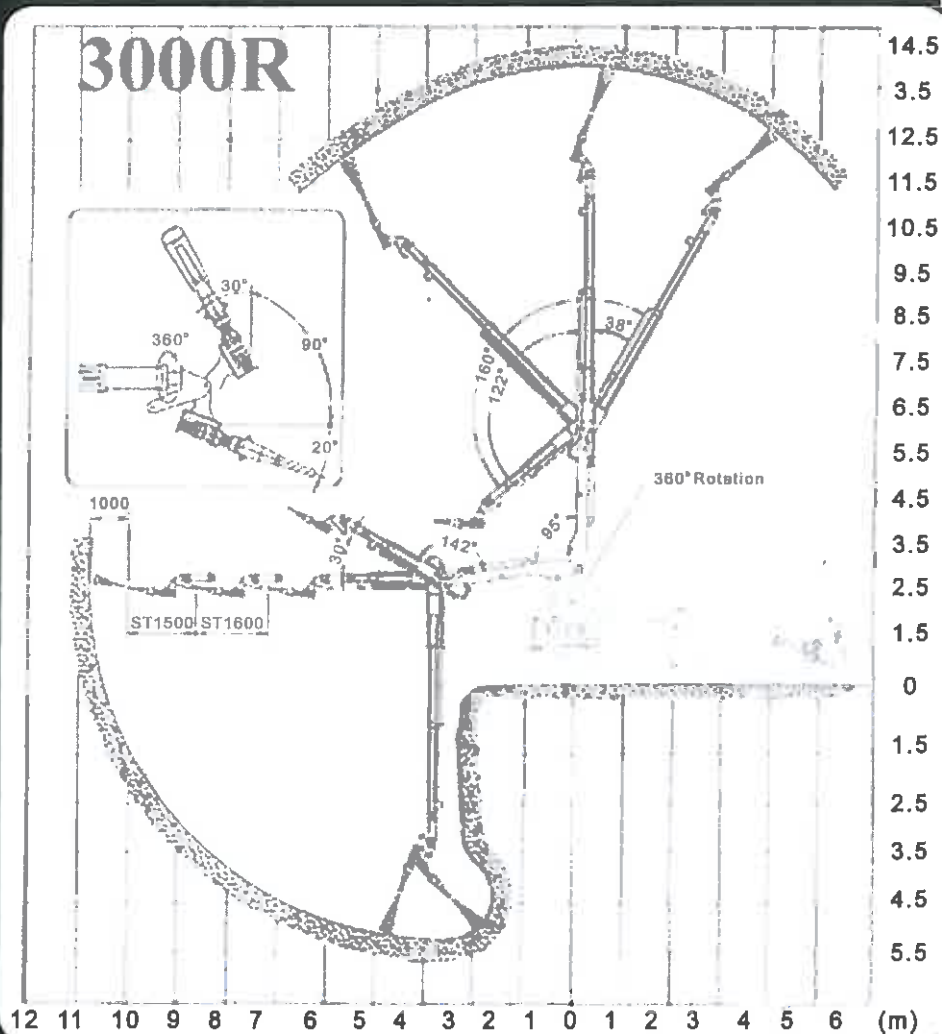
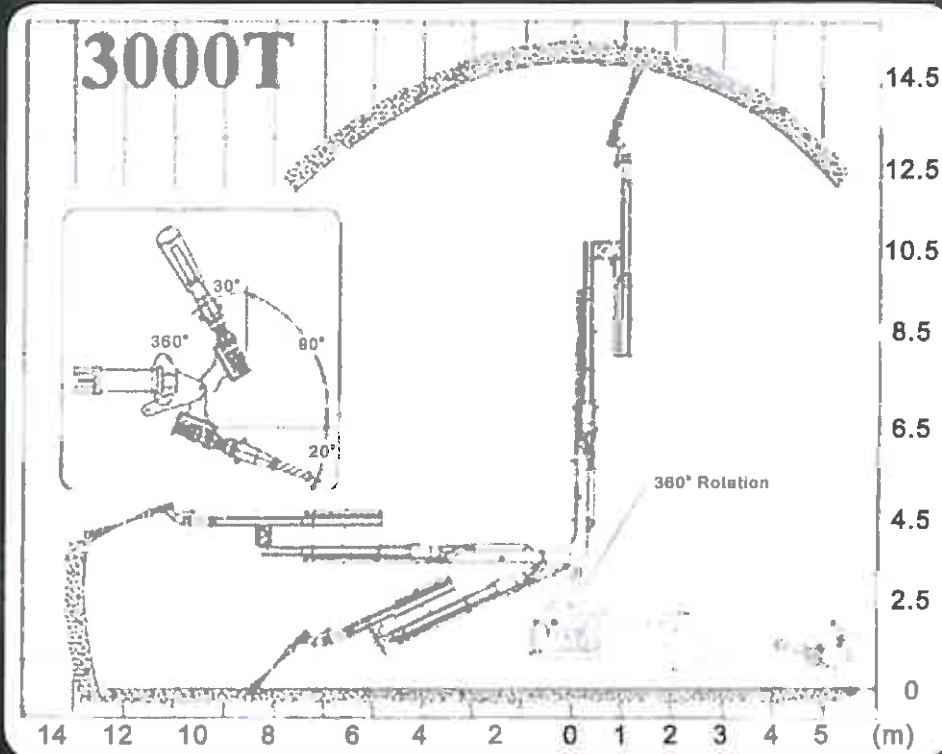
Concrete Spray Pump

The specially designed concrete spray pump is located in the rear of the vehicle for ease of use. The pump unit is capable of 35 m³/h allowing it to perform well in high volume applications. The 180mm cylinders ensure hassle free pumping of low slump concrete mixes and mixes with steel fibres.



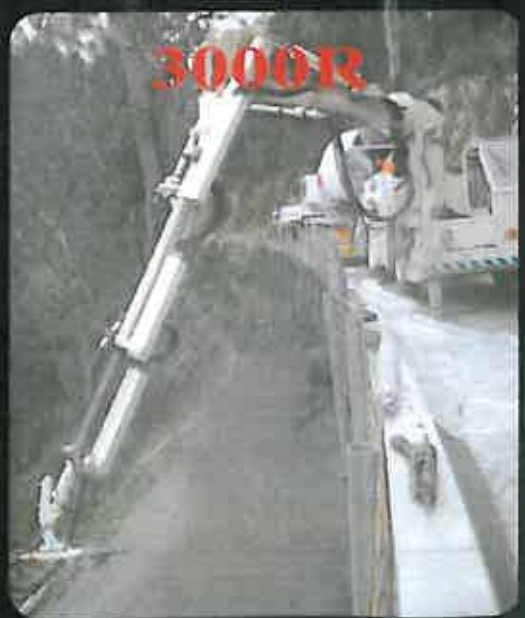
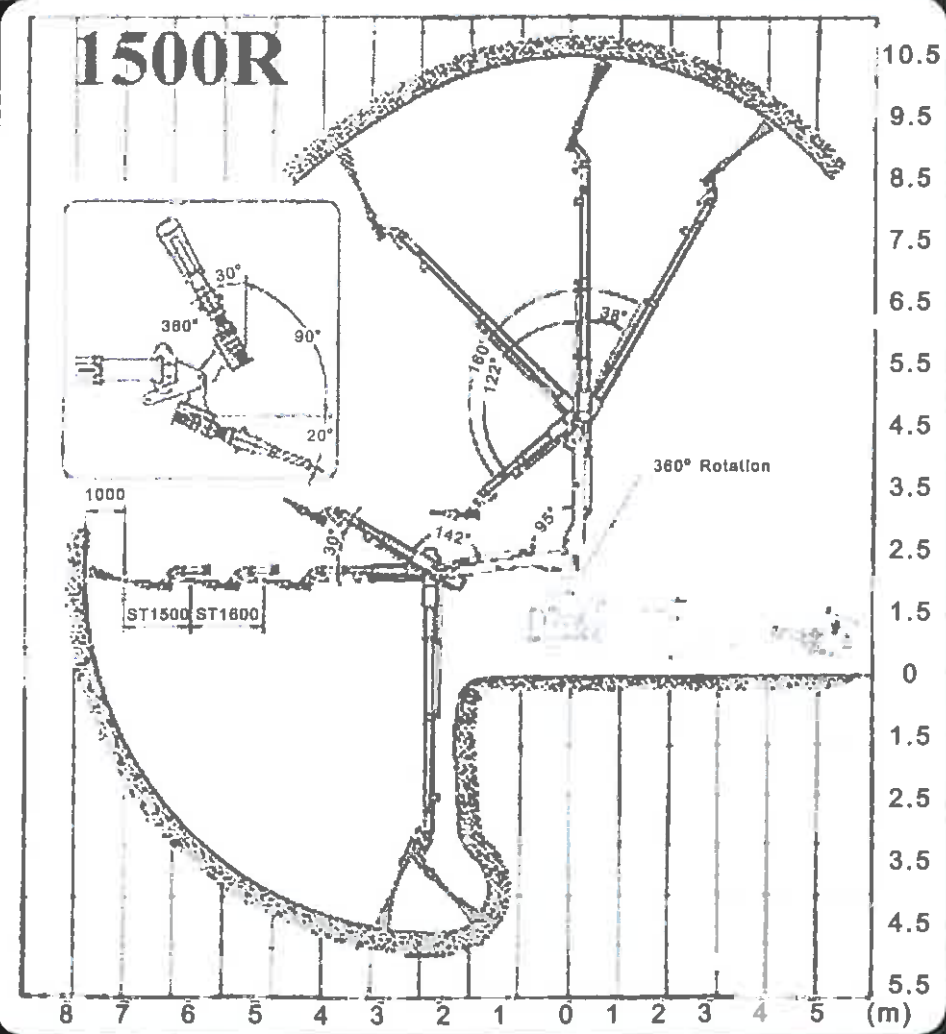
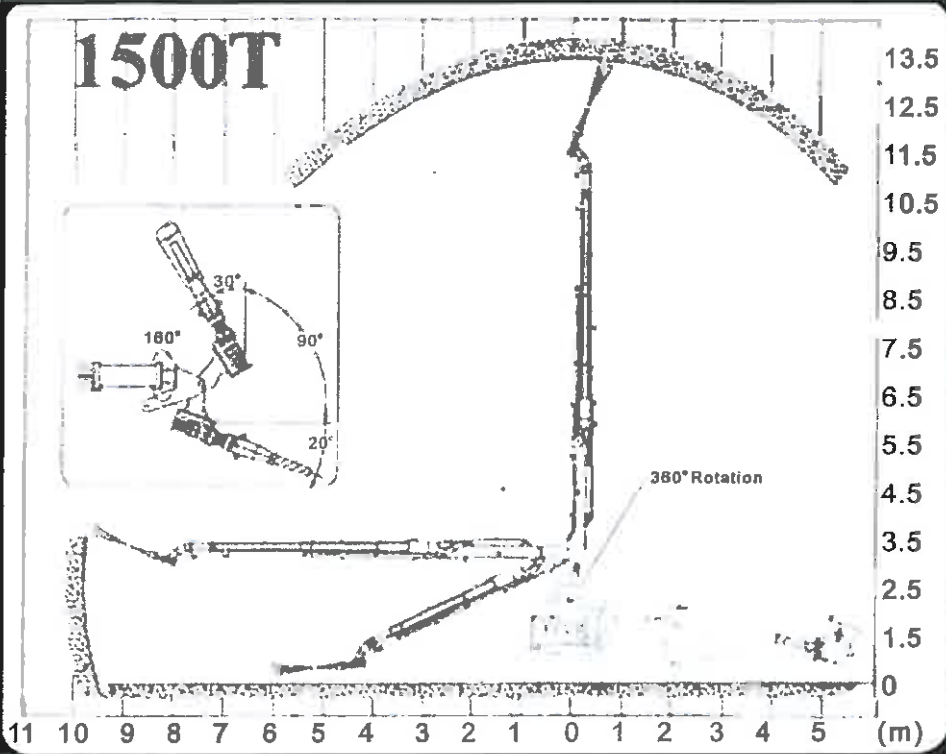
Sprayboom 3000

The Sprayboom 3000 is an ultra heavy duty boom for use in larger openings and where durability is of most importance. The boom is purpose built and has a high degree of flexibility for spraying around corners. The boom stows over the rear of the vehicle for tramming which aids the drivers ability to negotiate tight bends.



Sprayboom 1500

The Sprayboom 1500 is a heavy duty boom for use in smaller openings or ultra low headroom applications. The boom is purpose built and has a high degree of flexibility for spraying around corners. The 1500 model also has automated extension and bending features which allow easier more efficient operation. The boom stows over the rear of the vehicle for tramming which aids the drivers ability to negotiate tight bends



NX64 Carrier Dimensions	1500R Roll Fold Series Boom	1500T Telescopic Series Boom	3000R Roll Fold Series Boom	3000T Telescopic Series Boom
Carrier length	8770mm	8770mm	8770mm	8770mm
Carrier Width	2546mm	2546mm	2650mm	2550mm
Carrier Height	3250mm	3050mm	3250mm	3400mm
Wheel Base	3050mm	3050mm	3050mm	3050mm
Track	1660mm	1660mm	1660mm	1660mm
Ground Clearance	320mm	320mm	320mm	320mm
Turning Radius	5720(OD)/3140(ID)	5720(OD)/3140(ID)	5720(OD)/3140(ID)	5720(OD)/3140(ID)
Hopper Feed Height	1300mm	1300mm	1300mm	1300mm
Approach Angle	12 Deg	12 Deg	12 Deg	12 Deg
Departure Angle	13 Deg	13 Deg	13 Deg	13 Deg
Rear Overhang	3000mm	3000mm	3000mm	3000mm
Front Overhang	2600mm	2600mm	2600mm	2600mm

Scorpion Boom Dimensions				
Boom opening Height	3420mm	3150mm	3500mm	4000mm
Boom opening Width	3440mm	4200mm	4100mm	5130mm
Horizontal Reach	7200mm	9500mm	9950mm	11650mm
Vertical Reach	9800mm	12100mm	13550mm	14250mm
Lateral coverage	14400mm	19000mm	19900mm	23300mm
Nozzle Rotation	380 Deg	380 Deg	380 Deg	380 Deg
Nozzle Tilt	110 Deg	110 Deg	110 Deg	110 Deg
Telescopic Travel	1100mm	5000mm	2800mm	6500mm
2 nd Stage Rotation	200 Deg	N/A	200 Deg	N/A
Horizontal To Vertical lift	90 Deg	80 Deg	90 Deg	80 Deg
Boom Slew	380 Deg	380 Deg	380 Deg	380 Deg
Lateral boom rotation	340 Deg	N/A	340 Deg	N/A
Auto nozzle rotation	Continuous	Continuous	Continuous	Continuous
Stabiliser extension	1000mm	1000mm	1000mm	1000mm
Nozzle length	700mm	700mm	700mm	700mm
Nozzle operating Distance	600/2000mm	600/2000mm	600/2000mm	600/2000mm

JMP60 Pump Specifications				
Concrete Output R/S	35 m3/h	35 m3/h	35 m3/h	35 m3/h
Concrete Pressure R/S	62 Bar	62 Bar	62 Bar	62 Bar
Concrete Cylinder Diameter	180mm	180mm	180mm	180mm
Concrete Cylinder Type	Hard Chromed	Hard Chromed	Hard Chromed	Hard Chromed
Concrete Cylinder Stroke	1000mm	1000mm	1000mm	1000mm
Hydraulic Pressure	4350 psi	4350 psi	4350 psi	4350 psi
Hopper Lube System	Auto	Auto	Auto	Auto
Switching System	Hydraulic	Hydraulic	Hydraulic	Hydraulic
Hopper Capacity	450 Ltr	450 Ltr	450 Ltr	450 Ltr
Change Over s/p/m	28 s/p/m	28 s/p/m	28 s/p/m	28 s/p/m
Output Control range	6m3/h -35m3/h	6m3/h -35m3/h	6m3/h -35m3/h	6m3/h -35m3/h
Accelerator storage	1000 Ltr	1000 Ltr	1000 Ltr	1000 Ltr
Accelerator Output	0 -45 litre/min	0 -45 litre/min	0 -45 litre/min	0 -45 litre/min

Standard Supply

- MDG15 compliant
- Mercedes Benz OM904 Diesel Engine
- 35m³/h concrete pump
- Hydraulic powered boom with 2 wired remote controls
- Built to underground hardrock mine specifications
- 6 nozzle automatic fire suppression system
- Failsafe wet braking system
- ROPS/FOPS ergonomic operators cabin
- Bredel Accelerant pump
- Air & water manual windup hose reels
- Driving and working lights
- Fully sealed and air conditioned cabin
- Fast change over 1000 litre accelerant tank
- Accelerant flowmeter

Options and Extras

- High pressure boom mounted nozzle hydroscaling system
- Form Oil spray kit for hopper and boom protection
- Radio remote boom control system
- Electric/Hydraulic power pack (this option does not run diesel motor unless tramping)
- Powered hose windup reels



www.flowcrete.com.au

Australia
 Head Office
 15 Beaumont Road
 Mt Kuring-gai NSW 2080
 Phone: 02 9457 8044
 Fax: 02 9457 9205
 Email: sales@flowcrete.com.au
 www.flowcrete.com.au

Philippines
 Lot 24, FTI Complex, East Service Road
 Western Bicutan, Taguig City
 PHILIPPINES
 Phone: +63 2 8239635
 Fax: +63 2 7765586

Thailand
 47 Kanjanapisek Road
 Sanpansoong
 BANGKOK
 Phone: 00116627292851-2
 Fax: 00116627292856