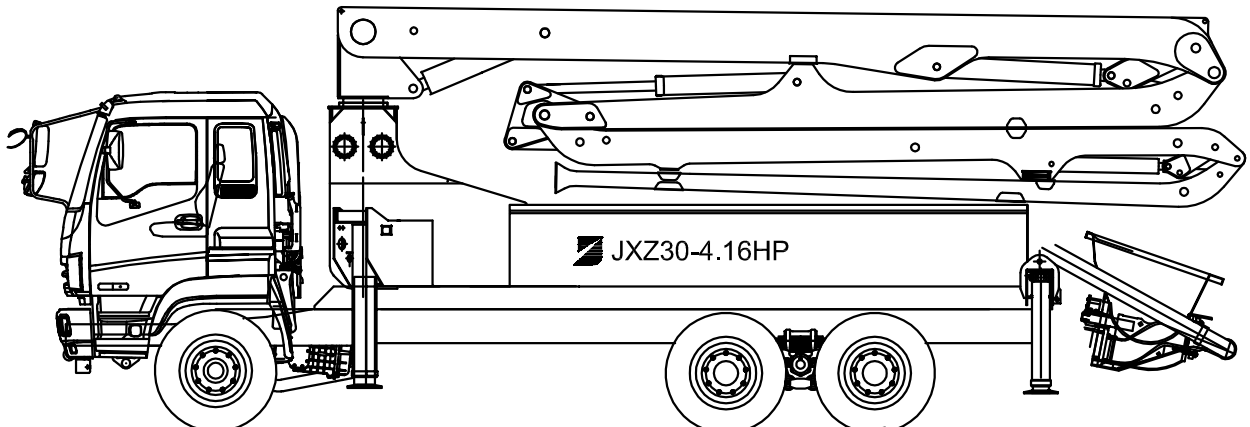
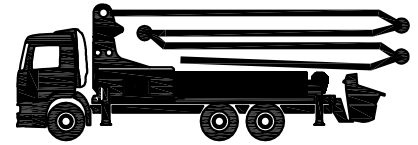
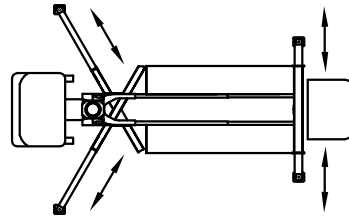


# Concrete Boom Pump



## JXZ30-4.16HP

- CON. OUTPUT MAX 160m<sup>3</sup>/h
- 30-Meter with 4-SECTION



### ■ Design

The pump and drive units are mounted within and on a subframe. This subframe is ready for mounting on a truck chassis.

### ■ Drive

Hydr. Pumps installed to P.T.O gear box are driven by diesel engine of chassis and the hydraulic power of them makes two piston rods of main cylinders operated in a push-pull mode. Automatic stroke correction control and special low-friction piston rings of main cylinder, a large capacity filter for cleanliness and auto-grease pump.

### ■ Control

Main cylinder and s-valve is switched over automatically by the hydraulic pilot pressure at their end position. 2-line system with accumulator for quick and strong change-over of s-valve.

Reverse pumping makes the direction of delivery piston changed.

This means pressure is relieved immediately from the delivery line without switching-over the s-valve.

### ■ Delivery cylinder

Hard-chromed and honed delivery cylinder for long service life. Delivery piston with hyd. Oil lubrication as standard.

### ■ S-valve

The concrete is sucked in directly from the hopper and pushed straight into the delivery line.

easily replaceable wear parts. Wear ring adjustable. Effective shifting of s-valve with lean mixes of crushed stone and high-rise pumping.

### ■ Hopper with agitator

Approximately 600 l

### ■ Output

Infinitely variable up to max.160m<sup>3</sup>/h

### ■ Concrete mix

Pumpable concrete of all consistencies down to 35mm slump, max aggregates approx.40mm

### ■ Standard version

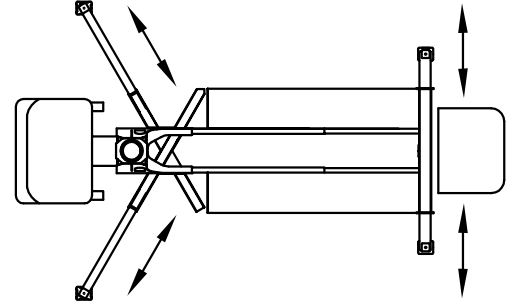
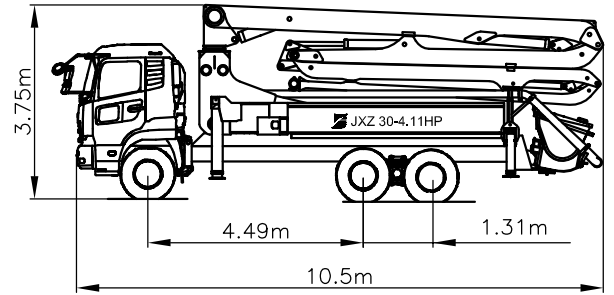
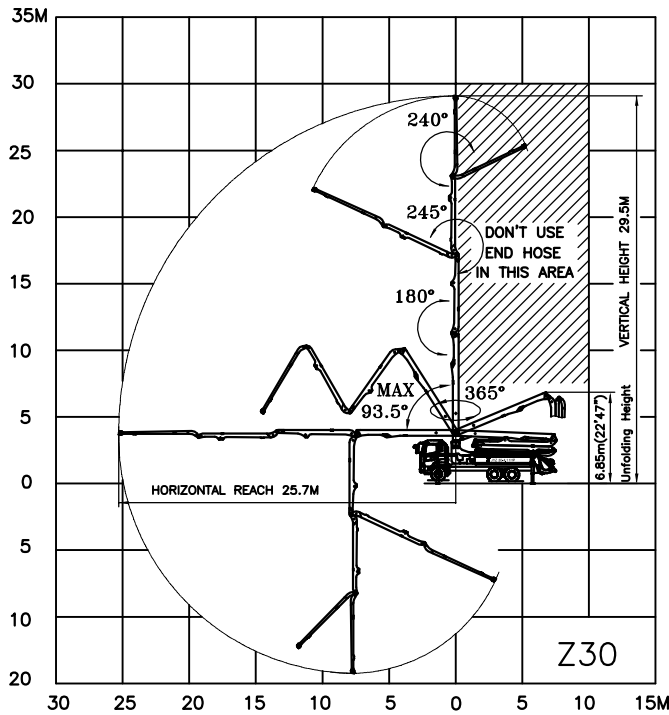
Cable remote control and radio remote control.

500 l water tank, hydraulically driven heavy-duty flushing water pump(up to 20bar) with 10m spray hose, 2 sponge rubber balls, cleaning connection with coupling to fit boom delivery line, tool box with grease gun and set of tools, operating instructions and parts list(2-fold)

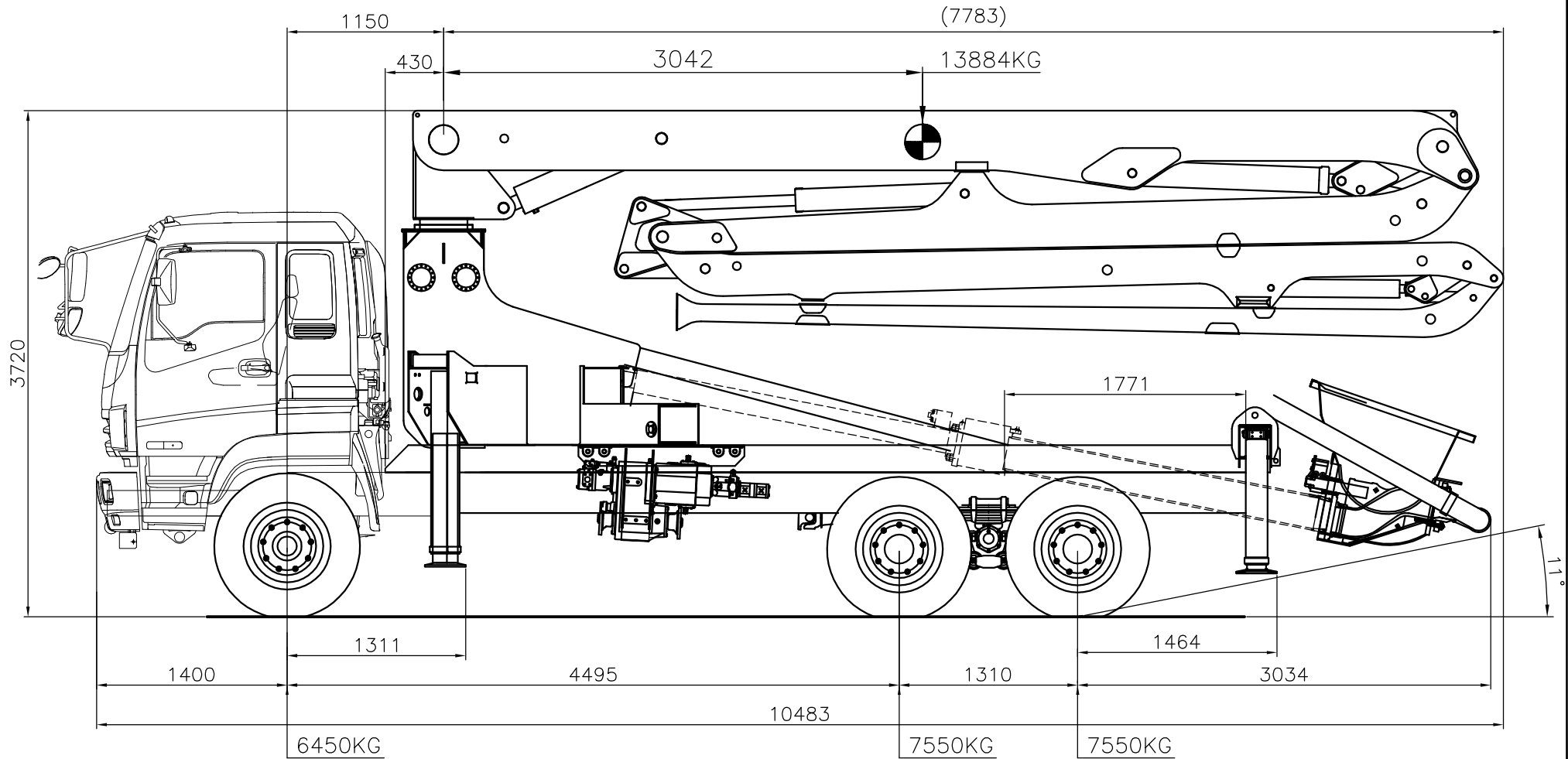
### ■ Option

Electrically driven heavy-duty vibrator, air compressor with hydraulic drive.

# Specifications



PIPELINE FLUSHING	CONCRETE OUTPUT MAX(THEO.)		160 m <sup>3</sup> /h	
	DELIVERY CYL. BORE X STROKE		230 x 2100mm	
	NUMBER OF STROKE PER MINUTE		30N	
	VALVE TYPE		S - VALVE	
	STROKE SWITCHING SYSTEM		HYDRAULIC	
	CONCRETE PRESSURE(THEO.)		69(112) BAR	
	HOPPER CAPACITY		600 l	
PIPELINE FLUSHING SYSTEM	TYPE		WATER FLUSHING	
	WATER PUMP	TYPE	MULTI-STAGE CENTERFUGAL PUMPING TYPE	
		CUT OF PRESSURE	20 BAR	
		DISCHARGE RATE	120 l /min	
WATER TANK CAPACITY		500 l		
BOOM	TYPE		4-SECTION HYDRAULIC FOLDING BOOM	
	MAXIMUM HORIZONTAL REACH		25.7 m	
	MAXIMUM VERTICAL REACH		29.5 m	
	SWING ANGLE	FIRST SECTION	-2.5 ~ 91°	L = 7.5 m
		SECOND SECTION	0 ~ 180°	L = 5.9 m
		THIRD SECTION	0 ~ 245°	L = 6.1 m
		FORTH SECTION	0 ~ 245°	L = 6.2 m
	SWING ANGLE		365°	
CONCRETE PIPE DIAMETER		125A		
OUTRIGGER CONTROL	FRONT	X-TYPE EXTENSION & VERTICAL		
	REAR	HORIZONTAL & VERTICAL EXTENSION		
TRUCK CHASSIS	TYPE			
	ENGINE	TYPE		
		MAXIMUM OUTPUT		
	FUEL TANK CAPACITY			
CROSS VEHICLE WEIGHT				



\*TOTAL WEIGHT: 21550KG

With hyd. fluid  
With con. pipe  
Without water

\*AXLE WEIGHT of TRUCK

FRONT W=4060KG  
REAR W=3470KG  
TOTAL W=7530KG

\* This drawing can be not the same as the real pump.

NO.	DESCRIPTION	SPECIFICATION	Q'TY	MATERIAL	REMARK
APPROVED BY	TITLE : APPEARANCE DWG FOR JXZ30-4.16HP				
CHECKED BY					
DESIGNED BY	SCALE 1/28	FORMAT A3	DRAWING NO.	JP110919HJ-1	ITEM NO.
DRAWN BY 김혜중	DATE 11.09.19	3RD ANGLE PROJECTION	PART NO.		
CUSTOMER ISUZU(22TON)					
<b>JUNJIN HEAVY INDUSTRY CO.,LTD.</b>					

"본도면은 전진중공업(주)의 출원한 제신으로 사전협의나 통보없이 무단복제시 형사상 책임을 다한다."