



2011-02-07 VER.2

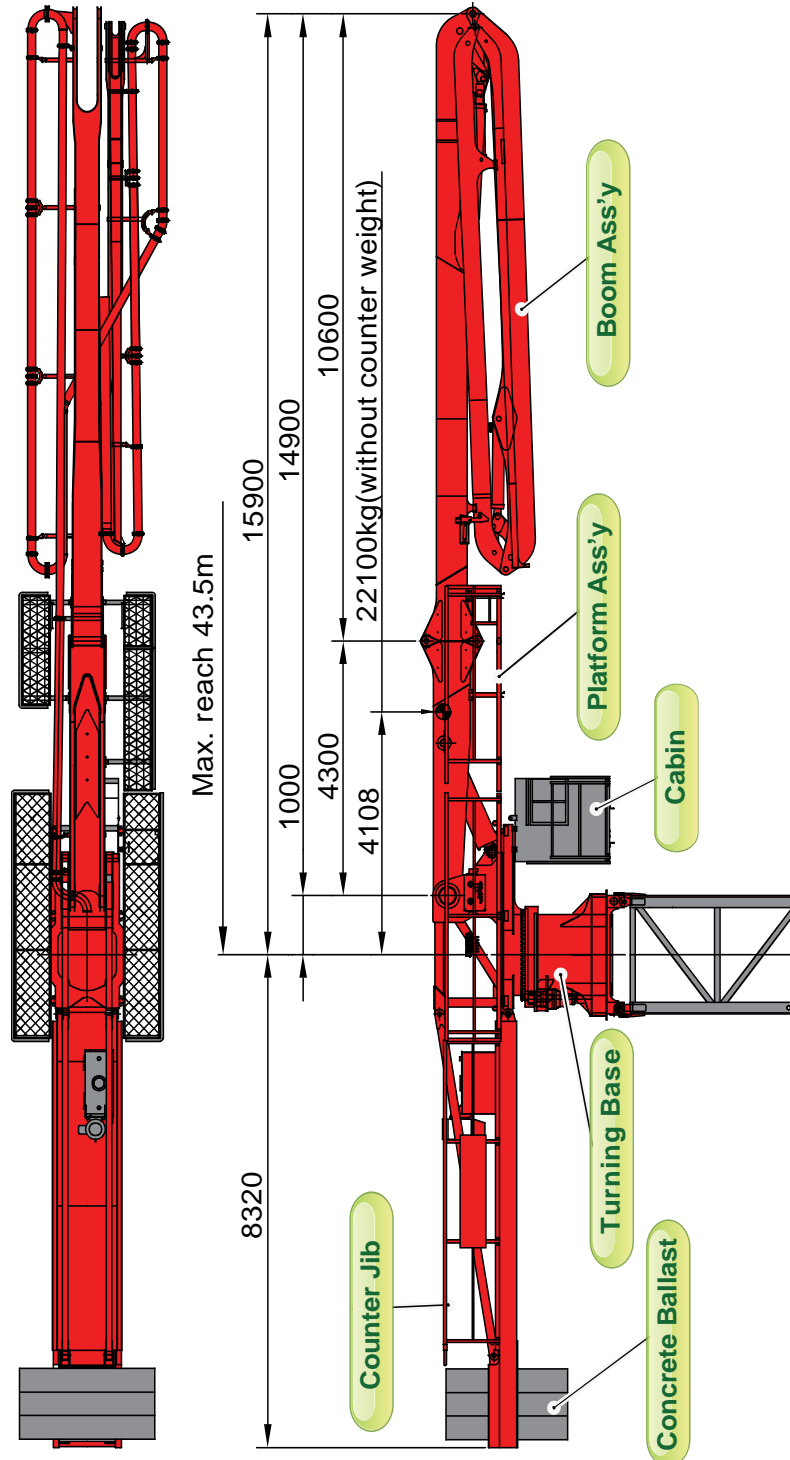
DATA SHEET

PLACING BOOM



JB-T44H

Placing System on Tower Mast
44M 4 Sections R & Fold Designed Boom



* All technical data are theoretical values and Specification are subject to change without prior notice.
* JUNJIN HEAVY INDUSTRY CO.LTD 33 OSEONRI GEUMWANGUP EUMSEONGGUN CHUNBUK, KOREA WWW.JUNJIN.COM



2011-02-07 VER.2

DATA SHEET

PLACING BOOM



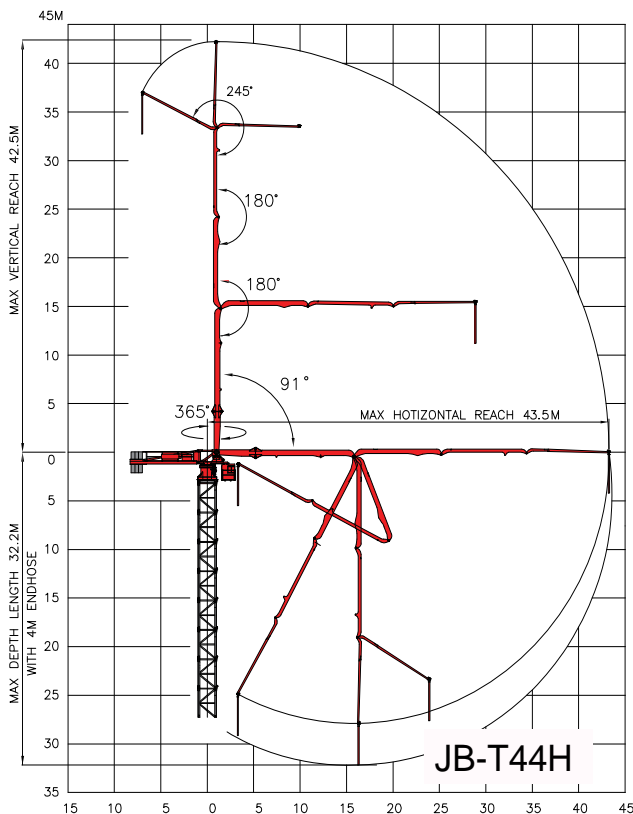
JB-T44H

Placing System on Tower Mast
44M 4 Sections R & Fold Designed Boom

■ Boom Specification / Technical Specification

Boom Design		R & Fold	Boom Articulation	1st Section	91°
Horizontal Reach		43.5m		2nd Section	180°
Vertical Reach		42.5m		3rd Section	180°
Reach Depth		32.2m		4th Section	245°
Boom Length	1st Section	10.6m	Rotation		365°
	2nd Section	9.4m	Delivery Line		DN 125mm(5")
	3rd Section	9.2m	Electric Power		AC380V / 60Hz
	4th Section	9.0m	Control Systems		Radio-Cable-Manual
End Hose Length		4.0m			

■ Working Diagram



* All technical data are theoretical values and Specification are subject to change without prior notice.
* JUNJIN HEAVY INDUSTRY CO.LTD 33 OSEONRI GEUMWANGEUP EUMSEONGGUN CHUNBUK, KOREA WWW.JUNJIN.COM



2011-02-07 VER.2

DATA SHEET

PLACING BOOM

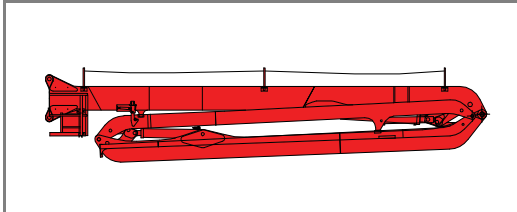


JB-T44H

Placing System on Tower Mast
44M 4 Sections R & Fold Designed Boom

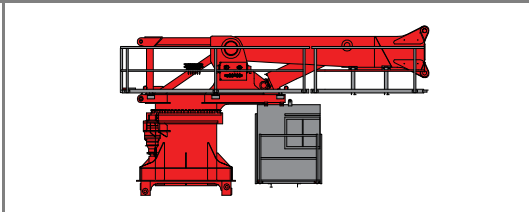
Standard delivery Scope

▷ Boom ass'y



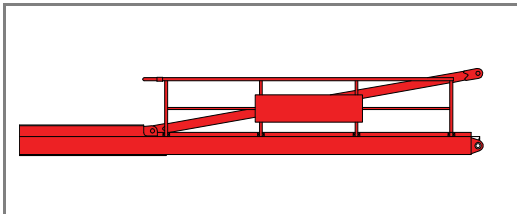
- Boom Ass'y : 1Set
- Total Weight: 8,000 kg

▷ Platform Ass'y / Turning Base / Cabin



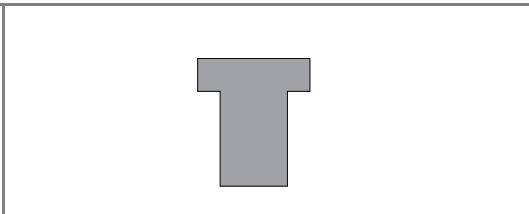
- Platform Ass'y : 1Set
- Turning Base : 1EA
- Cabin : 1EA
- Total Weight : 11,000 kg

▷ Counter Jib



- Counter Jib : 1 Set
- Total Weight : 3,100 kg

▷ Concrete Ballast



- Concrete Ballast : 3 EA
- Total Weight : 15,000 kg (3000 kg*3)

* All technical data are theoretical values and Specification are subject to change without prior notice.
 * JUNJIN HEAVY INDUSTRY CO.LTD 33 OSEONRI GEUMWANGEUP EUMSEONGGUN CHUNBUK, KOREA WWW.JUNJIN.COM