

JUNJIN CONCRETE PUMP SERVICE INFORMATION



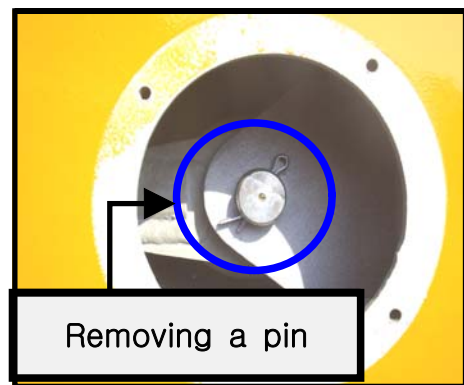
JSI - EN - 05 - 6A - 001		Date	Feb 1st, 2005
Total Pages	1	Present Page	1
Written by	IL KYU, AN	Approved by	IN JAE, HWANG
Subject	Front outrigger inner box O/H(M43, M50, M55)		

■ Front outrigger inner box O/H(M43, M50, M55)

- ① Swing out and extend the outrigger as shown below.
- ② After drain air pressure, disassemble connected hoses.
 - Disassemble hyd. lines form outrigger check valve.
 - (※ Hyd. oil leaks form each line, plug lines if necessary.)



- Remove a pin connected to the rod eye as shown below.
Protect the cylinder rod using wooden block which can support the rod not to be damaged.



- ③ Remove the inner box using a forklift or a crane carefully.

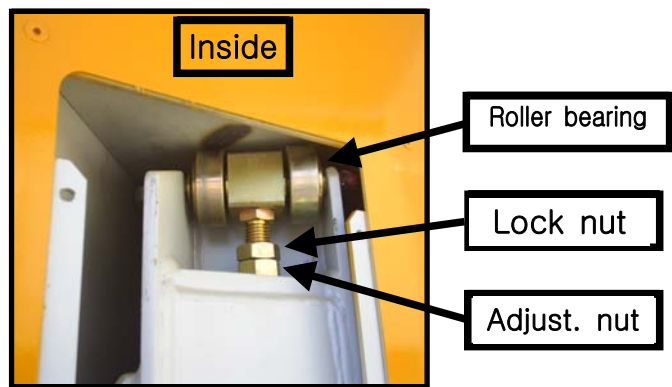
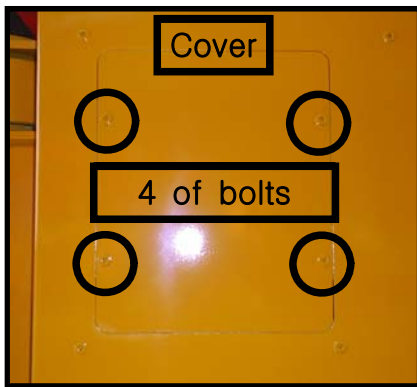
JUNJIN CONCRETE PUMP SERVICE INFORMATION



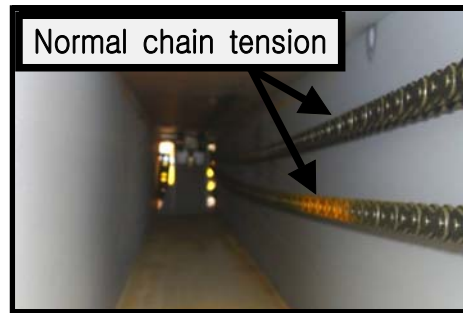
JSI - EN - 05 - 6A - 002		Date	Feb 1st, 2005
Total Pages	2	Present Page	1
Written by	IL KYU, AN	Approved by	IN JAE, HWANG
Subject	Front outrigger O/H(M37)		

■ Front outrigger O/H(M37)

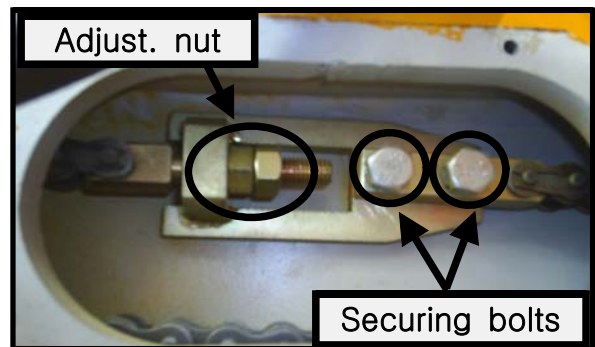
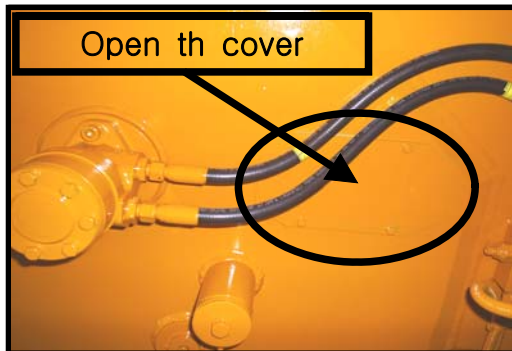
- ① Open the cover before operating the outrigger.
- ② Adjust the roller bearing using M36 wrench.



- ③ Extend the outrigger fully, then release P.T.O and drain air pressure.



- ④ Open the cover for adjusting the length of chain.

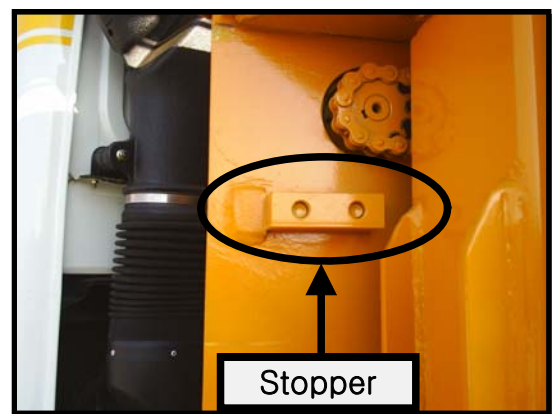
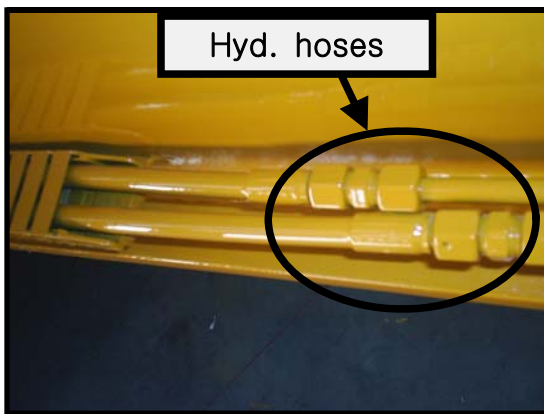


JUNJIN CONCRETE PUMP SERVICE INFORMATION



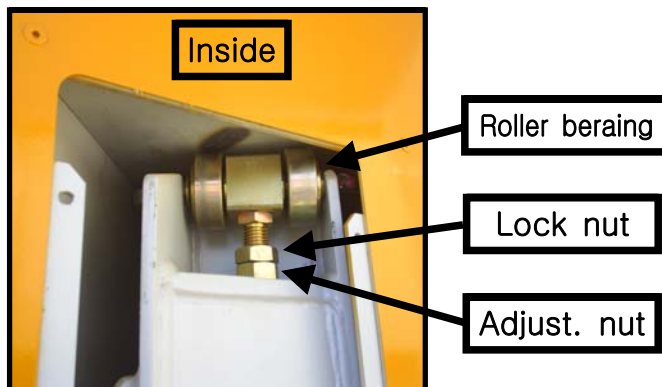
JSI - EN - 05 - 6A - 002		Date	Feb 1st, 2005
Total Pages	2	Present Page	2
Written by	IL KYU, AN	Approved by	IN JAE, HWANG
Subject	Front outrigger O/H(M37)		

- Loosen the 2 of securing bolts.
- ⑤ Disassemble hoses and remove the stopper.



- ⑥ Remove the front outrigger using a forklift or a crane.

■ Adjusting roller bearing



- Loosen the lock nut, and adjust the height of bearing.

■ Possible failure causes

- Bad movement of outrigger when in and out or sticking inside.
- Outrigger hangs down when extended.