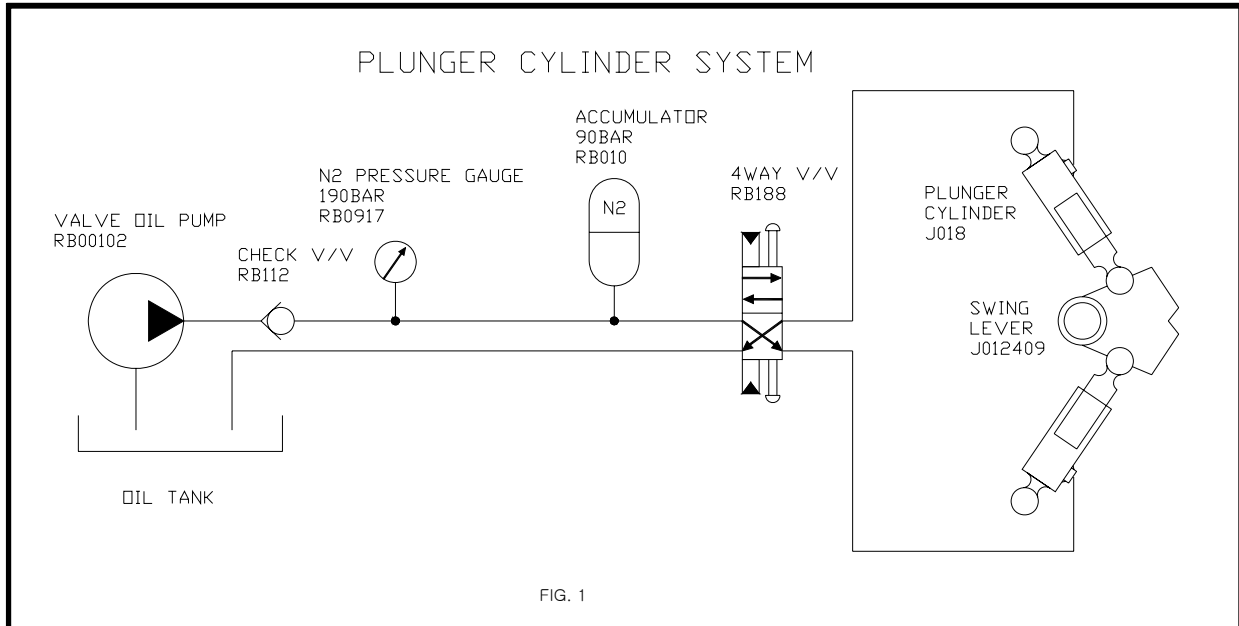


# JUNJIN CONCRETE PUMP SERVICE INFORMATION



JSI - EN - 05 - 5C - 001	Date	Feb 1st, 2005
Total Pages	1	Present Page
Written by	IL KYU, AN	Approved by
Subject	Plunger cylinder	

## ■ Plunger cylinder system



As an actuator of the accumulator pump it is shifted explosively whenever the stroke of main cylinder changes.

## ■ Possible failure cause

Seals of plunger cylinder should be replaced when oil leaks between rod and its tube.

## ■ S-valve change-over failure

- ① Gravel of concrete is too big to be changed over.
- ② Damaged accumulator bladder
- ③ Accumulator pump(A10V) failure

Caution ① : Refer to JSI-EN-2005-5A-014 for seals replacement.

Caution ② : The size of gravel is smaller than  $\phi 40$  normally.

JUNJIN HEAVY INDUSTRY SERVICE DEPARTMENT 428-1 Doosung-ri Maengdong-Myun Eumsung-Gun Chungbuk, Korea

Tel : (+82)43 877-3023 Fax : (+82)43 882-3023 E-MAIL : AS@JUNJINCONCRETEPUMPS.COM

© COPYRIGHT 2005 JUNJIN HEAVY INDUSTRY CO., LTD. ALL RIGHTS RESERVED

# JUNJIN CONCRETE PUMP SERVICE INFORMATION



JSI - EN - 05 - 5C - 002		Date	Feb 1st, 2005
Total Pages	2	Present Page	1
Written by	IL KYU, AN	Approved by	IN JAE, HWANG
Subject	Design change of swing lever for plunger cylinder		

## Major difference

New type of swing lever has machined grooves on the each side so that the cohesiveness with the wear sleeve is much stronger than before. It is required to use proper pair of part when replacement of wear sleeve.

※ Use of new swing lever on production line starts from Dec, 2004.

## Pictures of swing lever



Fig. 1 New swing lever (Grooved)

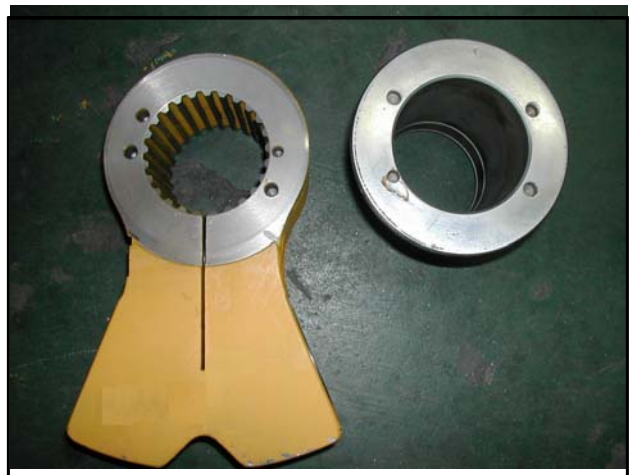


Fig. 2 Old swing lever (Key-type)



Fig. 3 Assembly of swing lever and wear sleeve

# JUNJIN CONCRETE PUMP SERVICE INFORMATION



JSI - EN - 05 - 5C - 002		Date	Feb 1st, 2005
Total Pages	2	Present Page	2
Written by	IL KYU, AN	Approved by	IN JAE, HWANG
Subject	Design change of swing lever for plunger cylinder		

## ■ Part number comparison

	Old / New		All model	Hi-moli(JM-2100HP)	Remark
1	Old type	Swing lever	J01240900	J18240900	
2		Wear sleeve	RB0600900	RB9520100	
3	New type	Swing lever	J01242400	J18242400	
4		Wear sleeve	RB0600100	RB9520900	