



NEW SOUTH WALES

1/15-17 Beaumont Road
Mt. Kuring-gai NSW 2080
P: 02 9457 8044
F: 02 9457 9205
F: 02 9457 8108
E: spares@flowcrete.com.au

WESTERN AUSTRALIA

10 Industry Street
Malaga WA 6090
P: 08 9248 4811
F: 08 9248 3511
E: waspares@flowcrete.com.au

VICTORIA

13/355 - 365 Sth Gippsland HWY
Dandenong VIC 3175
P: 03 8787 5844
F: 03 8787 5855
E: vicspares@flowcrete.com.au

NEW ZEALAND

23A Rennie Drive
Mangere, Auckland 2022
New Zealand
M: 027 539 0048
P: 09 257 0574
F: 09 257 0135
E: nzspares@flowcrete.com.au

QUEENSLAND

1/35 Sodium Street
Narangba QLD 4504
P: 07 3888 8988
F: 07 3888 8999
E: qldservice@flowcrete.com.au

m.facebook.com/flowcrete

www.linkedin.com/company/flowcrete-group-pty-limited

youtu.be/QiBIWneAI4Y

www.flowcrete.com.au



SPARE PARTS
& CONSUMABLES

SPARE PARTS
& CONSUMABLES

www.flowcrete.com.au

General service life and position of the wear parts

SPARE PARTS & CONSUMABLES

Below service life is set on the basis of pumping as 8 hours/1 day.

However, the quality of concrete and proper lubrication will be involved in the service intervals.

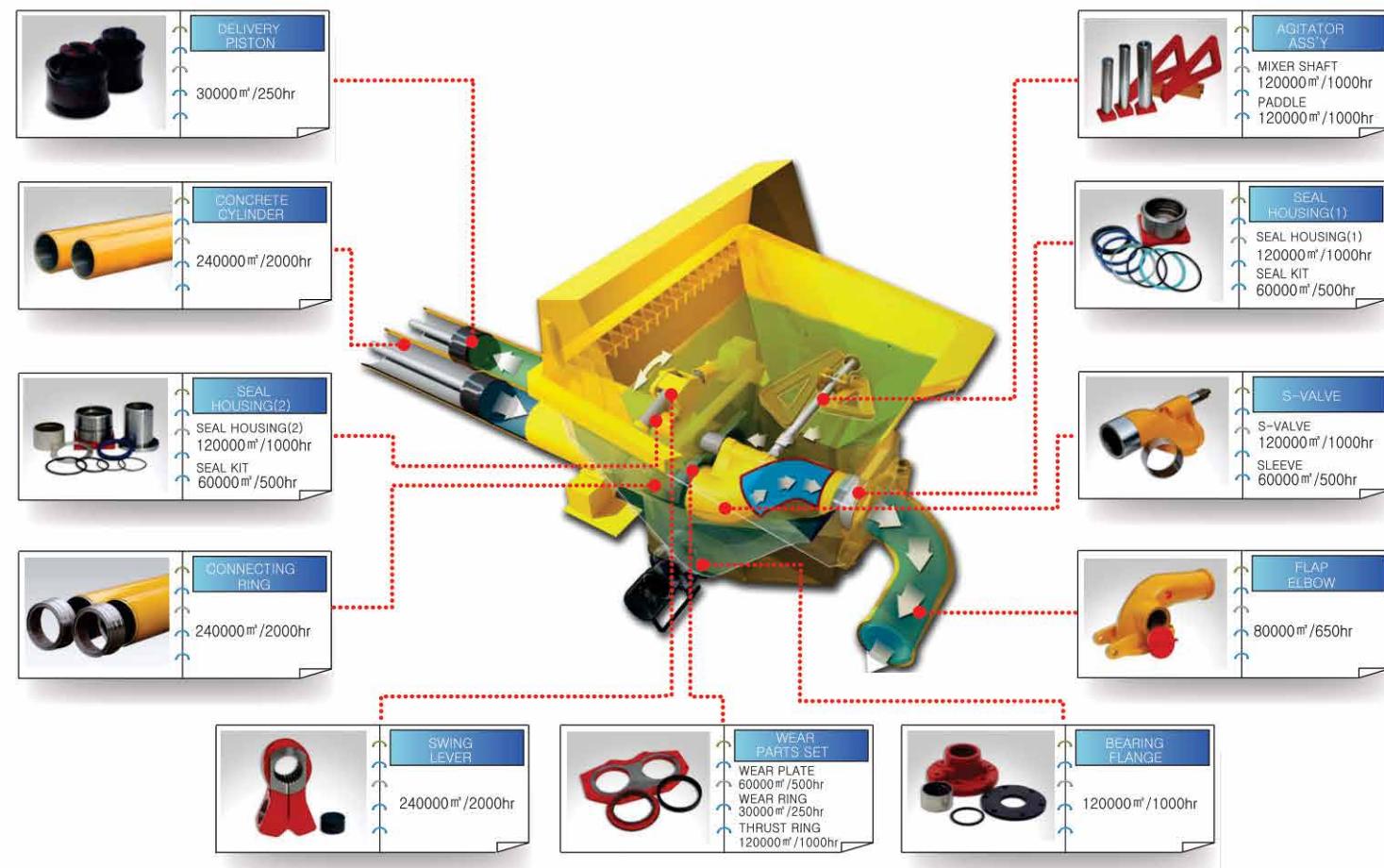


Table of Contents

SPARE PARTS & CONSUMABLES

Introduction	02
Contact your Local Branch	04
Pipes & Solid Ends	05
Reducers	06
Clamps and Accessories	07
Couplings Junjin and Accessories	08
Bends, Slurry Caps, T'pieces, Shut Off Valves	09
Blow Out Balls, Catchers & Sponges	10
Hose Per Metre, Reducing & Accessories	11
Hose Tails & Clamps	12
Hose Assemblies - Fabric 2" - 2.5"	13
Hose Assemblies - Fabric 3" - 3.5"	14
Hose Assemblies - Fabric 3.5" - 4"	15
Hose Assemblies - Steel 2" - 2.5"	16
Hose Assemblies - Steel 3" - 4"	17
Dongyang Boom Pipeline Parts	18
Spray Guns, Hoses & Accessories	19
Wear Plates	20
Wear Rings	21
S'Pieces, Locators, Spline Shafts, Anti Chip Rings, Outlet Seals & Hopper Outlets	22
Swinger Rams, Minor Links, and Outlet Seal Housings	23
Junjin S'Pieces, Swing Levers & Agi Parts	24
Junjin Spline Shafts & Parts, Outlet Housing Seals & Flanges	25
Hopper Outlet Bends, Flap Elbows & Accessories	26
Piston Cups	27
Gland Packings, Bearings, Wiper & Piston Seals	28
Motors, Pumps, Filters & Seal Kits	29
Solenoids, Relays, Sensors and Limit Switches	30
Remote Controls & Parts	31
Miscellaneous	32
Concrete Pumps	33
General service life and position of the wear parts	36



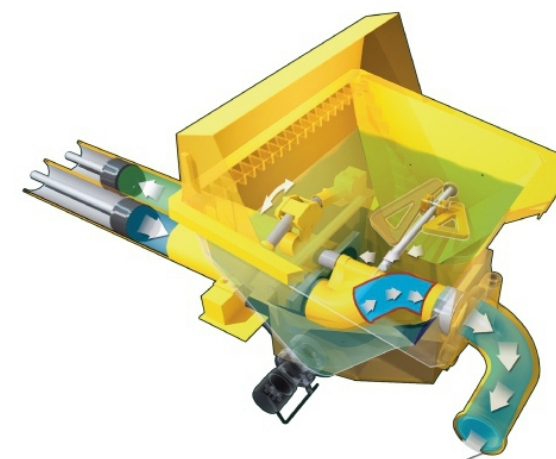
Flowcrete has specialised since 1982 in the booming concrete pump industry and are distributor of one of the worlds recognised and respected brands JunJin. Additionally, Flowcrete provides the industry a vast inventory of quality parts and local support in Australia and New Zealand ensuring our customers never stop pumping. We are committed to product quality, innovation, and service excellence.

Flowcrete as distributor of JunJin provide a one-stop shop service from manufacturing their complete line of new and used truck-mounted concrete boom pumps, line pumps, trailer pumps, separate placing booms to full service, inspections and recertifications. You can count on Flowcrete for superior equipment, affordable solutions, durable parts and dedicated service. It's not just a promise - it's proven.

At the end of the day, our goal is to put the world's best equipment on your job site, with the industry's most dependable support. It's the kind of commitment that will help you Perform at a Higher Level.

Innovation for best quality

Complete control for every size pump from 20 meter to 63 meter is achieved with a small lightweight radio remote control. Only the highest-grade and well-known brand components are used in JunJin concrete pumps. We deliver products that have passed severe quality testing and gone through a precise and accurate assembly process. We ensure the customer receives a durable product that performs well and is easy to control and maintain.



Super Swing-Valve

S-valve is so suitable to the harsh concrete because it has a big inner diameter(model S2018)

Hydraulic System (Two Line System)

This system has two independent lines for the main hydraulic cylinder and S-valve switching cylinder. This system makes sure smooth boom work during actual concrete pumping. This is so important for a concrete worker to handle an endhose easily because it can minimize boom's bouncing during pumping by keeping concrete flow continuous.



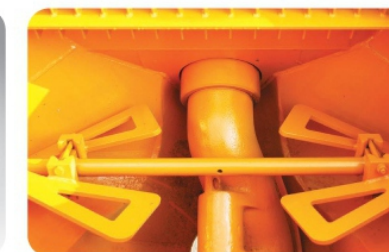
Wear Plate and Cutting Ring

A TUNGSTEN CARBIDE wear plate and cutting ring come standard with all JunJin pumps, providing a longer lifespan (up to 300% longer than non-carbide wear parts) which inevitably keeps maintenance costs down.



Ram

Through JUNJIN's own brand, such domestic manufacturing of Rubber Piston has been realized.

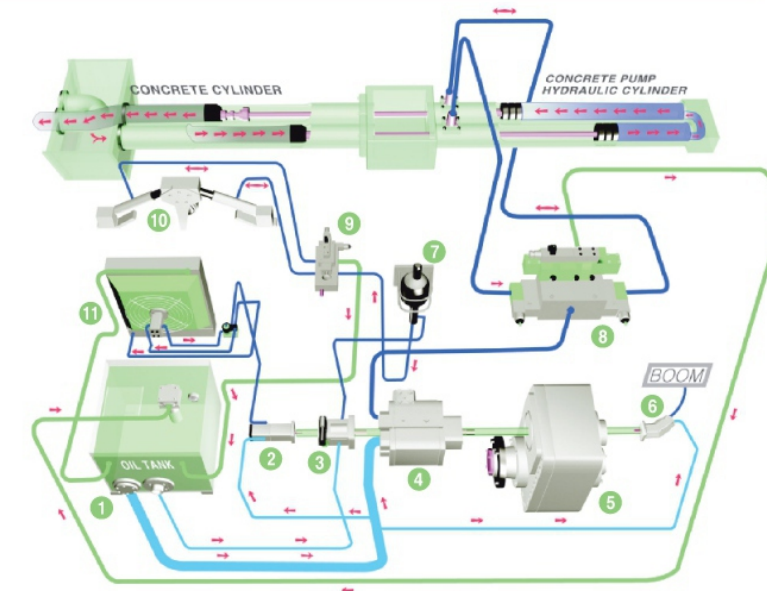
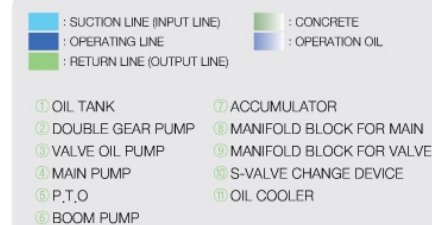


Hopper

The inside of hopper is applied in such spiral form so the concrete infection is easy when working. Also, the FLAP ELBOW of one touch way is applied in order to clean the small amount of cleaning waterway in a short time when cleaning. Since the discharge hole is possible to be assembled /disassembled when pipe working, it is able to response for various works.

Hydraulic Pumping System

- Since the overall system is simple, the customer is also able to maintain easily.
- There is such protection function for Pump and Engine since horse power control way is applied.
- Even though any parts are damaged, the side effects are minimized.

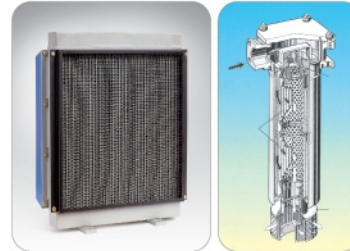


**BOOM control valves**

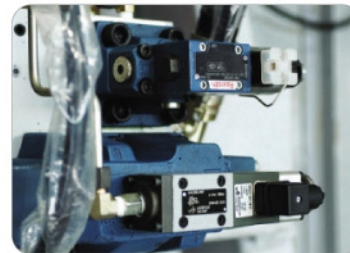
Well proven HAWE boom control valves work in conjunction with the radio remote providing smooth proportional boom operation

**Oil Cooler and Hydraulic filter**

The hydraulic filters and a large capacity oil cooler ensure longer service life of oil pumps and hydraulic valves.

**Solenoid Valve**

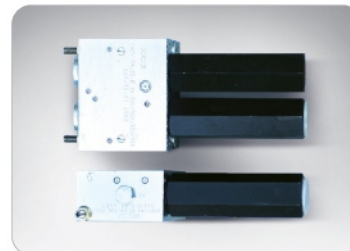
In case of electric device is out of order, it is possible to make manual operate.

**Main Oil Pump**

We use Bosch/Rexroth hydraulic components, recognized in the concrete pumping industry as a World leader in quality and performance. The operation of the Constant Power Control System is simple and reliable providing unsurpassed efficiency and fuel economy.

**Load Holding Valve**

Reliable HAWE load holding valves come standard on every boom cylinder, preventing boom sections from sinking under heavy load.

**OUR VISION**

- Be number one in the industry for customer confidence and satisfaction.
- Be recognized as one of the top industry brands.
- Set new standards for ethics and integrity.
- Deliver industry leading value to our customers.

OUR MISSION

Flowcrete is a value-added concrete pump industry leader servicing Australia and New Zealand. Our focus on customer driven product innovation results in a unique blend of high quality, simply reliable, and yet affordable products. We build trusting relationships with our customers and suppliers by exceeding their expectations and delivering maximum return on investment during the product life cycle.

OUR VALUES**Integrity**

Everything we do is driven by our integrity. Customers recognize our honesty and prefer dealing with us because they can trust us.

Customer Satisfaction

We value our customers by listening carefully, responding honestly, and effectively meeting their individual needs in a timely manner. We do it right and go the extra mile.

Employees

We value employees by genuinely caring for them and helping them to develop in and beyond their contribution to the company.

Work Ethic

We maintain a strong work ethic, and with a positive attitude, work effectively at everything we do.

Work Environment

Employees are proud to work here because of our positive work environment. Flowcrete is committed to being a great place to work.

Safety

We make positive and innovative contributions to the advancement of safety in our workplace

Contact your Local Branch

NEW SOUTH WALES

1/15-17 Beaumont Road
Mt. Kuring-gai NSW 2080
P: 02 9457 8044
F: 02 9457 9205
F: 02 9457 8108
E: spares@flowcrete.com.au

VICTORIA

13/355 - 365 Sth Gippsland HWY
Dandenong VIC 3175
P: 03 8787 5844
F: 03 8787 5855
E: vicspares@flowcrete.com.au

QUEENSLAND

1/35 Sodium Street
Narangba QLD 4504
P: 07 3888 8988
F: 07 3888 8999
E: qldservice@flowcrete.com.au

WESTERN AUSTRALIA


10 Industry Street
Malaga WA 6090
P: 08 9248 4811
F: 08 9248 3511
E: waspares@flowcrete.com.au

NEW ZEALAND

23A Rennie Drive
Mangere, Auckland 2022
New Zealand
M: 027 539 0048
P: 09 257 0574
F: 09 257 0135
E: nzspares@flowcrete.com.au

 www.flowcrete.com.au

 m.facebook.com/flowcrete

 www.linkedin.com/company/flowcrete-group-pty-limited

 youtu.be/QiBIWneAI4Y

SPARE PARTS & CONSUMABLES

Concrete Pumps

SPARE PARTS & CONSUMABLES

Main Components

Centralized Control Panel

User friendly, well-labeled fuse and relay banks offer low cost, long lasting common components. Operators will find trouble-shooting less intimidating with the simplicity of our 24 volt wiring design.



Outrigger

X-style outriggers are possible to work in small space and strong stability



Water Pump

Multistage centrifugal pump that is able to spray the water under such high pressure of 102L/20bar per minute

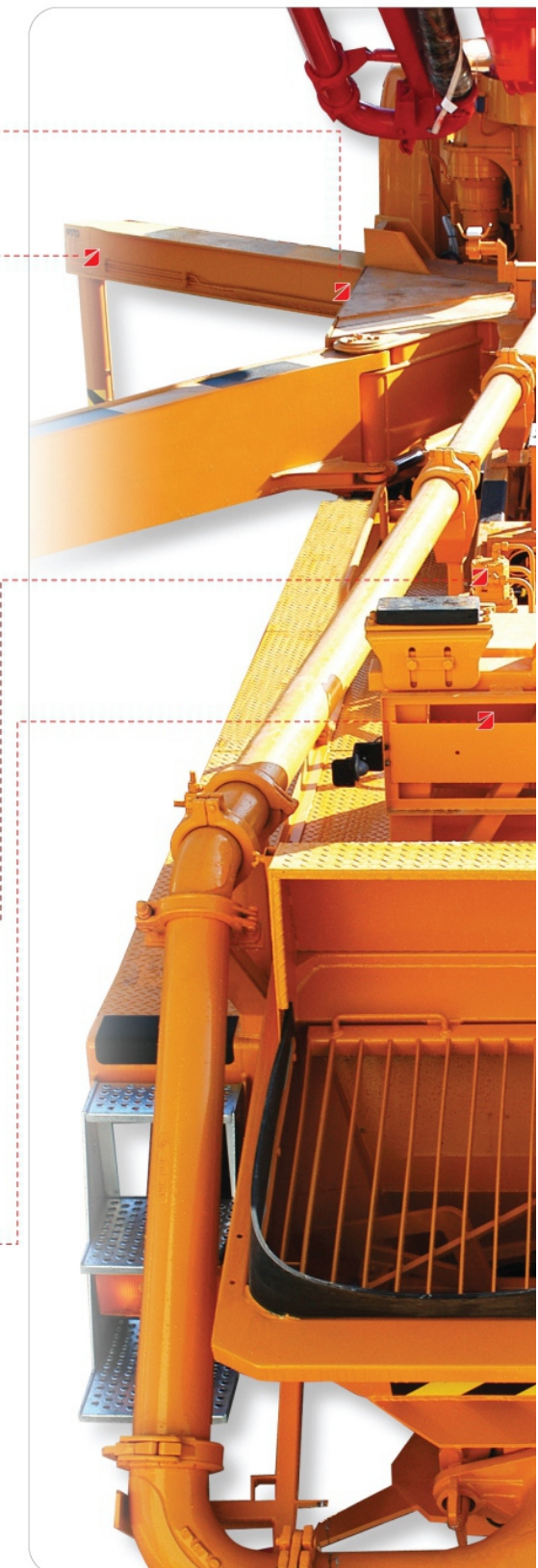


Automatic grease supply device



Radio Remote Control

Proportional radio remote control allows smooth and safe operation of the boom. Our standard HBC controls give the operator the option of adjusting the proportional settings right from the transmitter.



Miscellaneous

SPARE PARTS & CONSUMABLES

Part No.	Part Name / Description	Remark
Thickness Testing Equipment		
FP02430	Ultrasonic Thickness Gauge	
FP01921	Thickness Testing Gel	
Safety Sticker Kits		
FP00185	Safety Sticker Kit (Line Pump)	
FP01156	Safety Sticker Kit (Boom Pump)	
JunJin Genuine		
JJRB2150600	OUTRIGGER PAD 500 X 500 X 60	
JJRB21509	OUTRIGGER PAD 600 x 600 x 70	
NON OEM		
JJRB2150600KT	OUTRIGGER PAD 500 X 500 X 60	
JJRB21509KT	OUTRIGGER PAD 600 x 600 x 70	

Pipes & Solid Ends

SPARE PARTS & CONSUMABLES

Part No.	Part Name / Description	Remark
DELIVERY PIPES		
FP01969	3" x 3M x 2.5/3.0mm Pipe (ST52) With Victaulic Ends	
FP00422	4" x 3M x 2.5/3.0mm Pipe (ST52) With Victaulic Ends	
FP02019	4" x 3M x 4.0mm Pipe (ST52/Seamless) With Victaulic Ends	
FP01662	5" x 3M x 5.0mm Pipe (Hardened) With Victaulic Ends	
FP01579	5" x 3M x 5.0mm Pipe (Hardened) With Male/Female Putz Ends	
FP00425	5" x 3M x 5.0mm Pipe (ST52) With Victaulic Ends	
FP01939	5" x 3M x 7.0mm Pipe (Hardened) With Victaulic Ends	
FP00424	5" x 3M x 7.0mm Pipe (ST52) With Victaulic Ends	
SOLID ENDS		
FM00364	2" Pipe Weld On Solid Victaulic End (40mm Long)	
FM00365	3" Pipe Weld On Solid Victaulic End (40mm Long)	
FM00091	4" Pipe Weld On Solid Victaulic End (40mm Long)	
FM00090	5" Pipe Weld On Solid Victaulic End (40mm Long)	
FM00092	6" Pipe Weld On Solid Victaulic End (40mm Long)	
FP00810	7" Pipe Weld On Solid Victaulic End (40mm Long)	
FP01981	5" Pipe Weld On Solid Putz (M/F Ends) to suit 7mm pipe	Male & Female Set
FP02155	5" Twin Wall Weld On End	Suit 7mm Pipe
FP02143	5" Twin Wall Weld On End	Suit 5mm Pipe



Part No.	Description	Remark
FP01604	2" x 2.5" x 580mm Reducer	2.5" Side Use 3" Clamp
FP01983	3" x 2.5" x 710mm Reducer	2.5" Side Use 3" Clamp
FM00232	3" x 2" x 710mm Reducer	
FM00524	3" x 2" x 900mm Reducer	
FP01792	3" x 2" x 1200mm Reducer	
FM00319	4" x 2" x 900mm Reducer	
FM00516	4" x 2" x 1200mm Reducer	
FP00983	4" x 2.5" x 900mm Reducer	2.5" Side Use 3" Clamp
FP01605	4" x 2.5" x 1200mm Reducer	2.5" Side Use 3" Clamp
FP01705	4" x 3" x 600mm Reducer	
FP00969	4" x 3" x 900mm Reducer	
FM00229	4" x 3" x 918mm Reducer	
FM00517	4" x 3" x 1200mm Reducer	
FP01841	4" x 3.5" x 710mm Reducer	3.5" Side Use 4" Clamp
FP01900	5" x 3.5" x 700mm Reducer	3.5" Side Use 4" Clamp
FP01900/1	5" x 3.5" x 620mm Reducer	3.5" Side Use 4" Clamp
FM00376	5" x 4" x 1200mm Reducer	
FP01908	5" x 3" x 1000mm Reducer	
FM00231	5" x 4" x 620mm Reducer	
FP00955	5' x 4"X 918mm Reducer	
FP00923	5" x 4.5" x 918mm Reducer	4.5" Side Use 5" Clamp
FM01201	6" x 4" x 400mm Reducer	
FP01840	6" x 4" x 600mm Reducer	
FM00228	6" x 4" x 1000mm Reducer	
FM00519	6" x 5" x 600mm Reducer	
FP01836	6" X 5" X 680mm Reducer	
JJ651000PL	6" x 5" x 1.0m, 6" High Pressure Putz End & 5" Victaulic End	
JJ651100CH	6" x 5" x 1.1m, 6" High Pressure Putz End & 5" Victaulic End	
JJ6512000C	6" x 5" x 1.2m, 6" High Pressure Putz End & 5" Victaulic End	
JJ651200Z	6" x 5" x 1.2m, 6" Putz Bell Mouth End & 5" Victaulic End	
JJ651200ZH	6" x 5" x 1.2m, 6" ZX Bell Mouth End & 5" Victaulic End	
JJ651310Z	6" x 5" x 1.31m, 6" ZX Bell Mouth End & 5" Victaulic End	
JJ651410ZH	6" x 5" x 1.41m ZX	



Part No.	Part Name / Description	Remark
	ELSEMA	
FP01485	Elsema 1CH Transmitter (433mhz)	Hand Piece
FP01486	Elsema 1CH Receiver (433mhz)	12 & 24V
FP01287	Elsema 4CH Transmitter (433mhz)	Hand Piece
FP01288	Elsema 4CH Receiver (433mhz)	12 & 24V
FP00484	Elsema Aerial (433mhz)	
FP02578	Elsema Coding Cable	Required for Programming
FP01346	Elsema Receiver Mounting Bracket	
FP02382	Elsema Transmitter Cover	
	ATECH	
FP01430	Atech Black & White) 24v 3xJoystick Remote Set	
FP02049	Atech (Proportional) 24v 3x Joystick Remote Set	
FP01590	Atech Batery	
	HBC	
JJMS916	HBC 4 Stage Proportional Remote Set	
JJMS91700	HBC 5 Stage Proportional Remote Set	
JJRB1570500	HBC Batery (Blue or Red) Ni-mh 1.5Ah	
JJRB1570590	HBC Batery (Yellow) Ni-CD FUB 10AA	
JJRB87714	HBC Batery Charger 12/30V DC	
JJRB1581800	HBC Transmitter Hip Belt	
JJRB1570400	HBC Aerial KFZ with 5m Cable	



Solenoids, Relays, Sensors and Limit Switches

SPARE PARTS & CONSUMABLES

Part No.	Part Name / Description	Remark
JJB99900C	Solenoid Valve Assembly (for Agi & Oil Cooler)	24V
JJB9220200	Solenoid Valve Coil Only	24v
JJB0800200	Solenoid Valve Assembly (For Pumping)	24V
JJB0800202	Solenoid Valve Tin Coil Only	24V
JJB99600CO	Solenoid Valve Assembly (For Dump)	24V
JJB99670CO	Solenoid Valve Assembly (For Dump)	12V
JJB99972	Solenoid Valve Coil Only (Heat Sink)	12V
JJB92200	Solenoid Valve Prop Reducing (Old Type) C/W Coil	24V
JJB5670000	Valve Reducing Proportional (Old type) No Coil	24V
Relays		
JJB10140	Main Relay	24V
JJB08601	Control Relay - Clear 16 Pin	24V
JJB10174	Pump Relay (New Version)	24V
Sensors		
JJB06109	Temperature Sensor Hydraulic Tank	55°
JJB23301	Temperature Sensor	90°
Limit Switches		
JJB08626	Limit Switch for Boom (Slew)	
JJA63401	Limit Switch for 5 Stage Booms	
JJB68990	Limit Switch for Hopper Grate (Old Style)	
JJMS6800200	Limit Switch for Hopper Grate (New Style)	
JJS48302	Limit Switch for Hopper Grate (Models afer 1.06.2016)	



Clamps and Accessories

SPARE PARTS & CONSUMABLES

Part No.	Part Name / Description	Remark
Standard Victaulic End Clamps		
FP00204	2" Snap Clamp (Include Rubber Gasket)	Cast Steel
FP00205	3" Snap Clamp (Include Rubber Gasket)	Cast Steel
FP00207	4" Snap Clamp (Include Rubber Gasket)	Cast Steel
FP00209	5" Snap Clamp (Include Rubber Gasket)	Cast Steel
FP00211	6" Snap Clamp (Include Rubber Gasket)	Cast Steel
FP00803	7" Snap Clamp (Include Rubber Gasket)	Cast Steel
FP00206	3" Bolt Clamp (Include Rubber Gasket)	Cast Steel
FP00208	4" Bolt Clamp (Include Rubber Gasket)	Cast Steel
FP00210	5" Bolt Clamp (Include Rubber Gasket)	Cast Steel
FP00212	6" Bolt Clamp (Include Rubber Gasket)	Cast Steel
Gaskets		
FP00227	2" Rubber Gasket	
FP00228	3" Rubber Gasket	
FP00229	4" Rubber Gasket	
FP01853	4" Rubber Gasket With Middle Lip(Wide) Suit Dongyang Clamp	
FP02592	4" Rubber Gasket Slim With MD Lip - Suit FP00207 & FP00208	
FP01289	4.5" Rubber Gasket	
FP00230	5" Rubber Gasket	
JJB50038	5" Rubber Gasket - Suit Jun Jin Clamps W/Mid Lip	
FP01815	5.5" Rubber Gasket (Boom) W/Mid Lip	
FP00231	6" Rubber Gasket	
JJB60070	6" Rubber Gasket - Suit Jun Jin Clamps	
FP00804	7" Rubber Gasket	
"R" Clip/Locking Pin		
FP01433	Safety Locking Pins (Heavy Duty) Suit Snap Clamps	
FP01433L	Safety Locking Pins Long Suit 5" - 7" Snap Clamps	
Wall & Floor Brackets		
FP01879	4" U BOLT W/BACKING PLATE (FOR FP01880)	
FP01880	4" BRACKET VERTICAL (COMPLETE)	
FP01881	5" U BOLT ONLY (FOR FP01882)	
FP01882	5" U BOLT W/BACKING PLATE (FOR FP01882/1)	
FP01882/1	5" BRACKET VERTICAL (COMPLETE)	



Couplings Junjin and Accessories

SPARE PARTS & CONSUMABLES

Motors, Pumps, Filters & Seal Kits

SPARE PARTS & CONSUMABLES

Part No.	Part Name / Description	Remark
Jun Jin Clamps		
JJR40005	4" Bolt Clamp Std	Cast Steel
JJR40007	4" Bolt Clamp with 2 Bolt Mount Plate & Grease Nipple	Cast Steel
JJR40008	4" x 4 Bolt Swivel Clamp	Cast Steel
JJR50004N	5" Snap Clamp Std	Cast Steel
JJR60005	6"Snap Clamp Std	Cast Steel
JJR50047	5"Bolt Clamp Std	Cast Steel
JJR50036	5" x 4 Bolt Clamp with Grease Nipple	Cast Steel
JJR50030	5" Bolt Clamp - Slurry T Cap Clamp	Cast Steel
JJR50035	5" Snap Clamp with 2 Bolt Mount Plate & Grease Nipple	Cast Steel
JJR50048	5" Bolt Clamp with 2 Bolt Mount Plate & Grease Nipple	Cast Steel
JJR50027	5" 2 Bolt Clamp with 2 Bolt Mount Plate & Grease Nipple	Cast Steel
JJR60008	6" Wedge Clamp c/w Wedge 34mm Clamp area (ZX/SK)	Cast Steel
JJR60007	7" Bolt Clamp	Cast Steel
Jun Jin Clamp Spare Parts		
JJR6000703	6"Bolt Lock Nut Suits #JJRB60007 Clamp	
JJR6000704	6" I-Bolt Suits #JJRB60007	
JJR6000705	6" I-Bolt Pin Suits #JJRB60007 Clamp	
JJR6000706	6" I-Bolt Pin Washer Suits #JJRB60007 Clamp	
JJR5000101	5" I-Bolt Suits All Standard type 5" & 6" Bolt Clamps	
JJR5000102	5" I-Bolt Nut Suits all Standard Type 5" & 6" Bolt Clamps	
JJR5000103	5" I-Bolt Pin Suits All Standard type 5" & 6" Bolt Clamps	
JJR6000404	Wedge for #JJRB60008 Clamp	

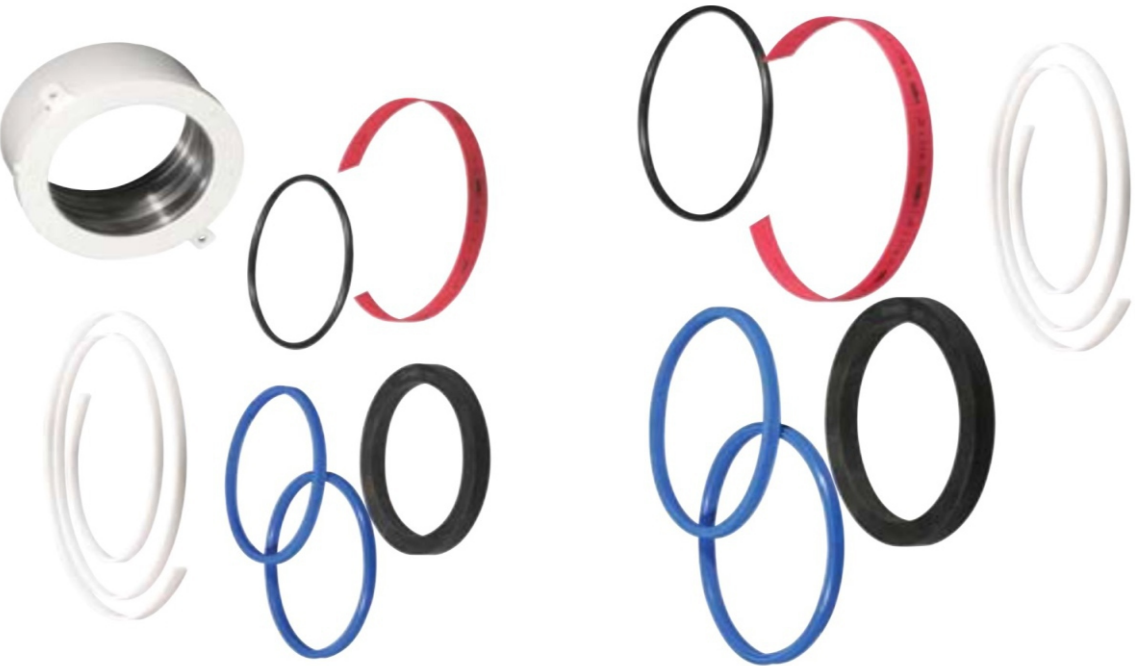
Part No.	Part Name / Description	Remark
JunJin		
JJR04000C	Agi Oil Motor	
JJR04003	Agi Oil Motor - Seal Kit	
JJMS584	Outrigger Oil Motor	
JJMS5846	Outrigger Oil Motor - Seal Kit	
JJMS477	Pump Gear Double	14/8CC
JJR65000	Pump Gear Double	19/19CC
JJR0160000	Water Pump Canister	No Motor
JJR056	Gear Oil Motor (Water Pump)	
JJR0169000	Water Pump Assembly	
NON OEM		
JJR04000CKT	Agi Oil Motor	
JJR04003KT	AGI Motor Seal Kit	
Flowcrete		
FP00528	Element Return Filter (Oil Tank / Return 748H)	
FP00322	Element Hydraulic Filter (DY Boom 21 & 25 MZX)	
JunJin		
JJR31203	Element Suction Filer	Suits all Jun Jin Pumps
JJR31103	Element Return Filter	Suit Moli/M32 & Over
JJR32104	Element Return Filter	Suit Z24 & Z28 Only (Single Element Mode)
JJMS29303	Element Return Filter (2 required per unit)	Suit Z25 & Z28 Only
JJR31303	Element Pressure Filter (Boom)	Suit Z25 up to 38 Only
JJR37303	Element Pressure Filter (Boom)	Suit M40 & Over Only
NON OEM		
JJR31203KT	Element Suction Filer	Suits all Jun Jin Pumps
JJR31103KT	Element Return Filter	Suit Moli/M32 & Over
JJMS29303KT	Element Return Filter (2 required per unit)	Suit Z25 & Z28 Only
JJR31303KT	Element Pressure Filter (Boom)	Suit Z25 up to 38 Only
JJR37303KT	Element Pressure Filter (Boom)	Suit M40 & Over Only



Gland Packings, Bearings, Wiper & Piston Seals

SPARE PARTS & CONSUMABLES

Part No.	Part Name / Description	Remark
Gland Packing		
FP00043	1.25"	
FP00044	1.75"	
FP00045	2"	
FP00046	2.25"	
FP00049	2.3/8"	
FP00047	2.5"	
FP00048	3"	
Wiper Seal		
FP00029	1.25"	
FP00030	1.75"	
FP00031	2"	
FP00032	2.25"	
FP00033	2.5"	
FP00034	3"	
Piston Seal		
FP00017	3"	
FP00023	3.25"	
FP00024	3.5"	
FP00022	4"	
FP00021	4.5"	
FP00020	5"	
Bearings		
FP00190	6" 50mm Trans	
FP00191	6" 60mm	
FP00192	8" 75mm	
FP00357	222 55mm	



Bends, Slurry Caps, T'pieces, Shut Off Valves

SPARE PARTS & CONSUMABLES

Part No.	Part Name / Description	Remark
Bends		
FP02104	3"x22° (Ø89x6x280R) With Victaulic Ends	
FP02072	3"x45° (Ø89x6x280R) With Victaulic Ends	
FP02105	3"x90° (Ø89x6x280R) With Victaulic Ends	
FP00216	4"x22° (Ø114x6x343R) With Victaulic Ends	
FP00215	4"x45° (Ø114x6x343R) With Victaulic Ends	
FP00214	4"x90° (Ø114x6x343R) With Victaulic Ends	
FP00163	4"x90° (Ø114x6x1000R) With Victaulic Ends	
FP02107	5"x22° (Ø140x7mm or 8mmx500R) With Victaulic Ends	
FP02108	5"x45° (Ø140x7mm or 8mmx500R) With Victaulic Ends	
FP00814	5"x90° (Ø140x7mm or 8mmx500R) With Victaulic Ends	
FP00398	5"x22° (Ø140x7mm or 8mmx1000R) With Victaulic Ends	
FP00397	5"x45° (Ø140x7mm or 8mmx1000R) With Victaulic /Ends	
FP02097	5"x90° (Ø140x7mm or 8mmx1000R) With Victaulic Ends	
Slurry Caps & "T" Pieces		
FM00384	4" Tee Piece	
FM01151	4" Slurry Cap	
FM00662	5" Tee Piece	
FM01188	5" Slurry Cap	
Shut Off Valves		
FM00537	4" Shut Valve	Manual Gate Type
FM00496	4" Shut Valve (Hydraulic)	Hydraulic
FM00538	5" Shut Valve	Manual Gate Type
FM00497	5" Shut Valve (Hydraulic)	Hydraulic
Junjin Radius Bends		
JJR36510	ELBOW 5" x 10°	
JJR36515	ELBOW 5" x 15°	
JJR36530	ELBOW 5" x 30°	
JJR36545	ELBOW 5" x 45°	
JJR36590-CAST	ELBOW 5" X 90° (CAST STEEL)	
JJR36590H-NEW	ELBOW 5" 90 275R (HI-IMPACT)	
JJR36590HT	ELBOW 5" X 90 (HARDENED)	



Blow Out Balls, Catchers & Sponges

SPARE PARTS & CONSUMABLES

Part No.	Part Name / Description	Remark
Blow Outs - Complete		
FP01909/ASSY	Multi Head Blow Out - 2,3 & 4" Victaulic Assy.	
FP02769	Blow Out Multi Adapter 5-4	
FM00535	2" Blow Out - Victaulic Assy.	
FM00379	3" Blow Out - Victaulic Assy.	
FM00378	4" Blow Out - Victaulic Assy.	
FM00383	5" Blow Out - Victaulic Assy.	
FM00251	6" Blow Out - Victaulic Assy.	
FM00179	6" Blow Out - Jun Jin Putz HP Assy.(Pre July 2007 Build) SK	
FM01288	6" Blow Out - Jun Jin ZX HP Assy. (Afer July 2007 Build)	
FP01229	O Ring to suit #FM00179 - 6" Blow Out	
JJORKA244	O Ring to suit #FM01288 - 6" Blow Out	
Ball Catchers		
FM02371	2" Ball Catcher - Victaulic Assy	
FM02370	3" Ball Catcher - Victaulic Assy	
FM00651	4" Ball Catcher - Victaulic Assy	
FM00989	5" Ball Catcher - Victaulic Assy	
Cylindrical Sponges and Blow Out Balls		
FP01920	4" Cylindrical Sponge - 6" Dia. @ 6& 1/14" Long	Foam Sponge
FP02127	5" Cylindrical Sponge - 8" Dia. @ 6"1/4" Long	Foam Sponge
FP01183	2" Sponge Ball - 3" Diameter - Medium	Fibre Ball
FP01760S	3" Sponge Ball - 4" Diameter - Soft	Fibre Ball
FP01760	3" Sponge Ball - 4" Diameter - Medium	Fibre Ball
FP00535	4" Sponge Ball - 5' Diameter - Soft	Fibre Ball
FP00535M	4" Sponge Ball - 5' Diameter - Medium	Fibre Ball
FP00535H	4" Sponge Ball - 5' Diameter - Hard	Fibre Ball
FP00430	5" Sponge Ball - 6" Diameter - Soft	Fibre Ball
FP00430M	5" Sponge Ball - 6" Diameter - Medium	Fibre Ball
FP00430H	5" Sponge Ball - 6" Diameter - Hard	Fibre Ball
FP01809	6" Sponge Ball - 7" Diameter - Soft	Fibre Ball



Piston Cups

SPARE PARTS & CONSUMABLES

Part No.	Part Name / Description	Remark
JunJin		
JJ043901	180mm Std Concrete Piston Assy - Rubber Block	
JJ023901	200mm Std Concrete Piston Assy - Rubber Block	
JJ183900	200mm HP Concrete Piston Assy - Steel Body	
JJ07390690	200mm HP Concrete Piston - Seal Only	
JJ0739079	200mm HP Concrete Piston - Guide Ring Only	
JJ013901	230mm Std Concrete Piston Assy - Rubber Block	
FP02101	230mm HP Concrete Piston Assy - Alloy Body	
JJ08390000	230mm HP Concrete Piston Assy - Steel Body	
JJ08390300	230mm HP Concrete Piston - Seal Only	
JJ08390200	230mm HP Concrete Piston - Guide Ring Only	
JJ123900	260mm HP Concrete Piston Assy - Steel Body	
JJ133903	260mm HP Concrete Piston - Seal Only	
JJ133902	260mm HP Concrete Piston - Guide Ring Only	
Schwing		
SCBP550	Piston Ram DN180	
SC60008	Piston Ram DN200	
SC12805	Piston Ram DN230	
Sermac		
FP02156	230mm Concrete Piston Assy - Rubber Block	
Jacon/Transcrete		
FP02401	Piston Cup 6 1/2" Double	
FP02256	Piston Cup 6"	
FP00335	Piston Cup 6 7/8"	
FP01814	Piston Cup 8"	
Flowcrete		
FP00037	6"	
FP01874	6" (Autox)	
FP00040	7"	
FP01875	7" (Autox)	
FP00039	8"	
FP01876	8" (Autox)	
NON OEM		
JJ023901KT	200mm Std Concrete Piston Assy - Rubber Block	
JJ013901KT	230mm Std Concrete Piston Assy - Rubber Block	



Hopper Outlet Bends, Flap Elbows & Accessories

SPARE PARTS & CONSUMABLES

Part No.	Part Name / Description	Remark
Hopper Outlet Bend - Standard Victaulic		
FP02024	4" - 3" 90° Reducing Bend	
FP01938	5" - 3" 90° Reducing Bend	
FP00218	5" - 4" 90° Reducing Bend	
FM00697	5" - 4" 90° Reducing Long Bend	
FM00698	6" - 4" 90° Reducing Bend	
FM01289	6" 90° with Victaulic Ends	
FM01249	6" 90° With 5" Slurry T Inlet	
FP02753	6" - 4" 90° Victaulic to Victaulic	
Hopper Outlet Bend - HP Putzmeister to Victaulic		
FM01244	6" - 5" x 90° Bend - 6" HP SK/Putz End to 5" Victaulic End	Line bend outlet for Jun Jin/Putz
FM01244/1	6" - 5" x 90° Bend - 6" ZX End to 5" Victaulic End	Line bend outlet for Jun Jin/Putz
FP02753/1	6" - 4" 90° ZX(M) End to Victaulic End	
Hopper Outlet Bend - Jun Jin Flap Elbows		
JJRB255000	7"- 6" HP SK/Putz End (Pre July 2007) Without Slurry T	
JJRB25590	7"- 6" HP SK/Putz End (Pre July 2007) With Slurry T	
JJRB2555	7"- 6" HP ZX End (Post July 2007) With Slurry T	
Hopper Outlet Bend - NON OEM Flap Elbows		
JJRB2555KT	7"- 6" HP ZX End (Post July 2007) With Slurry T	
Flap Elbow Accessories		
JJRB25570	Slurry Cap	
JJRB25570/1	Slurry Cap with catcher	
JJ18160700	O' Ring Slurry Cap	
JJORKA244	O RING ZX TYPE	
JJPA165	O' Ring SK Type	
JJ014403	Hinge Pin - Securing Pin To Hopper	
JJ014402	Flap Elbow Eye Bolt	
JJ014404	Stud Bolt	
JJ014405	Wedge	

Hose Per Metre, Reducing & Accessories

SPARE PARTS & CONSUMABLES

Part No.	Part Name / Description	Remark
Fabric		
FP00222	2"	Working Pressure 55bar, Safety Factor 3.5:1
FP01510	2.5"	Working Pressure 55bar, Safety Factor 3.5:1
FP00223	3"	Working Pressure 55bar, Safety Factor 3:1
FP00226	3.5"	Working Pressure 5bar, Safety Factor 3:1
FP00224	4"	Working Pressure 55bar, Safety Factor 3:1
Steel Braid		
FP01369	2"	Working Pressure 85bar, Safety Factor 2:1
FP00714	2.5"	Working Pressure 85bar, Safety Factor 2:1
FP01370	3"	Working Pressure 85bar, Safety Factor 2:1
FP00506	3.5"	Working Pressure 85bar, Safety Factor 2:1
FP01371	4"	Working Pressure 85bar, Safety Factor 2:1
Reducing Hoses		
FP02632	4"- 3.5"x 4m Fabric	
FP02677	4"- 3.5"x 4.5m Fabric	
FP02534	5"- 4"x 3m Fabric	
FP02534/1	5"- 4"x 4m Fabric	
Hose Hooks & Rings		
FM00094	3" Hose Hook & Handle	
FM00387	3" Hose Ring & Handle	
FM00683	4" Hose Hook & Handle	
FM00684	4" Hose Ring & Handle	
FM00917	5" Hose Hook & Handle	
FM00918	5" Hose Ring & Handle	



Hose Tails & Clamps

SPARE PARTS & CONSUMABLES

Part No.	Part Name / Description	Remark
Host Tails		
FP00417	2" Hose Tail	Harden With 2" Victaulic End
FP01578	2" Hose Tail With 2" BSP Female End	Spray Hose End
FP00233	3" Hose Tail	Harden With 3" Victaulic End
FP01298	4" Hose Tail	Harden With 4" Victaulic End
FP00236	5" Hose Tail	Harden With 5" Victaulic End
FP02083/2	2.5" x 3" Hose Tail With End (Reducing in Tail)	Harden With 3" Victaulic End
FP02083/3	2.5" x 3" Hose Tail With End (Non Reducing in Tail)	Harden With 3" Victaulic End
FP00235/4	3.5"x 4" Hose Tail With End (Reducing in Tail)	Harden With 4" Victaulic End
FP00235/3	3.5"x 4" Hose Tail With End (Non Reducing in Tail)	Harden With 4" Victaulic End
Ferrules		
FM01101	2"	Suitable For Fabric Hose
FP01817	2" - Small	Suitable For steel Hose
FM01130	2.5"	Suitable For Fabric Hose
FM01034	3"	Suitable For Fabric Hose
FM01268	3" - Small	Suitable For steel Hose
FM00855	3.5"	Suitable For Fabric Hose
FM00855/1	3.5" - 85 Bar	Suitable For Fabric 85bar Hose
FM00916	4"	Suitable For Fabric Hose
FM01265	4" - Small	Suitable For Steel Hose
FM00916/1	4" - 85 Bar	Suitable For Fabric 85bar Hose
FP02362	5"	Suitable For Fabric Hose
Cast Half Clamps		
FP00242	2" Half Clamp	Set of 2 including bolts
FP00243	3" Half Clamp	Set of 2 including bolts
FP00547	3.5" Half Clamp	Set of 2 including bolts
FP00244	4" Half Clamp	Set of 2 including bolts
FP00245	5" Half Clamp	Set of 2 including bolts

Junjin Spline Shafts & Parts,
Outlet Housing Seals & Flanges

SPARE PARTS & CONSUMABLES

Part No.	Part Name / Description	Remark
S-Valve Assembly - Spline Shaft Gear Sleeve		
JJRB06012	S-Valve Spline Shaft Gear Sleeve Std (Gear)	80mm
JJRB95212	S-Valve Spline Shaft Gear Sleeve HP - Moli	90mm
S-Valve Assembly - Spline Shaft Gear Sleeve Seal Kits		
JJRB06060	Spline Shaft Bearing Flange/Sleeve Seal Kit	80mm
JJRS1656000	Spline Shaft Bearing Flange/Sleeve Seal Kit HP-Moli	90mm
S-Valve Assembly - Spline Shaft Gear Sleeve Washer		
JJRB06008	Wear Sleeve Thrust Washer	80mm
JJRB95208	Wear Sleeve Washer HP-Moli	90mm
S-Valve Assembly - Spline Shaft Gear Sleeve Du-Bush		
JJRB0600202	Spline Shaft Bearing Flange Bronze Bush	80mm
JJLFB906	Spline Shaft Bearing Flange Du-Bush	90mm
Outlet Seal		
JJRB2540100	Outlet Seal Housing Std	
JJRB2549	Outlet Seal Housing Std Seal Kit	
JJRB05701	Outlet Seal Housing HP-Moli	90mm
JJRB0579	Outlet Seal Housing HP-Moli Seal Kit	90mm
JJRB23801	Outlet Seal Housing	
JJRB2386	Outlet Seal Kit 6"	
Flange		
JJRB06002	Spline Shaft Bearing Flange	80mm
JJRS1650200	Spline Shaft Bearing Flange HP-Moli	90mm



Part No.	Part Name / Description	Remark
	Thrust Ring for Wear Ring	
JJ032305	Thrust Ring Std 7" (Chromium Carbide Wear Ring)	
JJ012305	Thrust Ring "New Style"	Suits #JJ012304 & JJ01239300
JJ012396	Thrust Ring "Big Mouth" - VERSION 1 (Tungsten Wear Ring)	
JJ202305	Thrust Ring "Big Mouth" - VERSION 2 (Tungsten Wear Ring)	
	S-Valve Assemblies/Pieces Assemblies	
JJRB01800	S-Valve Assy 180/200mm C/W O/Let Wear Sleeve	80MM Shaft
JJMS02500	S-Valve Assy HP-Moli 150/200mm C/W O/Let Wear Sleeve	
JJMS925	S-Valve Assy "Big Mouth" 180/220mm C/W O/Let Wear Sleeve	90MM Shaft
JJMS851	S-Valve Assy "Big Mouth" 180/220mm C/W O/Let Wear Sleeve-Version 2	90MM Shaft
JJRB237	S-Valve Assy 150/190mm C/W O/Let Wear Sleeve	
	S-Valve Assembly - Spline Shaft Securing Nut & Washer	
JJ012405	Hex Nyloc Nut (Swing Lever To Spline Shaft)	
JJ012410	Thrust Washer (Behind Hex Nyloc Nut)	
	S-Valve Assembly - Outlet Wear Sleeve	
JJRB01804	S-Valve Outlet Wear Sleeve (Chromed) 180mm	Suits all except #JJRB237
JJRB23703	S-Valve Outlet Wear Sleeve (Chromed) 150mm	Suits #JJRB237
	Agitator Housing & Accessories	
JJ052208	Agi Paddle (2) Std	
JJ052207	Agi Paddle (1) Std	
JJ182241	Agi Mixer Shaft (Short End Shaft) 60mm	
JJ01224100	Agi Mixer Shaft (Short End Shaft) 50mm	
JJ032203	Agi Mixer Shaft (Short End Shaft) 50mm No Motor	
JJ012242	Agi Mixer Shaft (Middle Long Shaft)	
JJ012201	Agi Bearing Flange 50mm	
JJ112201	Agi Bearing Flange 60mm	
JJ01220103	Bush (Agi Bearing Flange) Nylon Type 50mm	
JJ10220103	Bush (Agi Bearing Flange) Nylon Type 60mm	
JJ01220106	Rubber Cone (Agi Bearing Flange) 50mm	
JJ18220500	Rubber Cone (Agi Bearing Flange) 60mm	
	Swing Lever	
JJ012424	Swing Lever	80MM Shaft
JJ182424	Swing Lever (HP-Moli)	90MM Shaft
JJ012419	Ball Socket	
JJ012401	Ball Socket Washer	

Part No.	Part Name / Description	Remark
	2"	
FP00222/10	HOSE ASSY 2" X 4M S/E FABRIC	Fabric Hose
FP00222/11	HOSE ASSY 2" X 5M S/E FABRIC	Fabric Hose
FP00222/3	HOSE ASSY 2" X 10M S/E FABRIC	Fabric Hose
FP00222/4	HOSE ASSY 2" X 10M D/E FABRIC	Fabric Hose
FP00222/5	HOSE ASSY 2" X 15M D/E FABRIC	Fabric Hose
FP00222/8	HOSE ASSY 2" X 20M D/E FABRIC	Fabric Hose
FP00222/9	HOSE ASSY 2" X 20M S/E FABRIC	Fabric Hose
	2.5"	
FP01510/1	HOSE ASSY 2.5 X 5M S/E FABRIC (RED)	Fabric Hose
FP01510/1A	HOSE ASSY 2.5 X 5M S/E FABRIC (NON RED)	Fabric Hose
FP01510/2	HOSE ASSY 2.5" X 4M S/E FABRIC (RED)	Fabric Hose
FP01510/2A	HOSE ASSY 2.5" X 4M S/E FABRIC (NON RED)	Fabric Hose
FP01510/3	HOSE ASSY 2.5" X 10M D/E FABRIC (RED)	Fabric Hose
FP01510/3A	HOSE ASSY 2.5" X 10M D/E FABRIC (NON RED)	Fabric Hose
FP01510/4	HOSE ASSY 2.5 X 2.5M D/E FABRIC (RED)	Fabric Hose
FP01510/4A	HOSE ASSY 2.5 X 2.5M D/E FABRIC (NON RED)	Fabric Hose
FP01510/5	HOSE ASSY 2.5 X 4M D/E FABRIC (RED)	Fabric Hose
FP01510/5A	HOSE ASSY 2.5 X 4M D/E FABRIC (NON RED)	Fabric Hose
FP01510/6	HOSE ASSY 2.5" X 10M S/E FABRIC (RED)	Fabric Hose
FP01510/6A	HOSE ASSY 2.5" X 10M S/E FABRIC (NON RED)	Fabric Hose
FP01510/7	HOSE ASSY 2.5" X 3M S/E FABRIC (RED)	Fabric Hose
FP01510/7A	HOSE ASSY 2.5" X 3M S/E FABRIC (NON RED)	Fabric Hose
FP01510/8	HOSE ASSY 2.5" X 5M D/E FABRIC (RED)	Fabric Hose
FP01510/8A	HOSE ASSY 2.5" X 5M D/E FABRIC (NON RED)	Fabric Hose
FP01510/9	HOSE ASSY 2.5 X 20M D/E FABRIC (RED)	Fabric Hose
FP01510/9A	HOSE ASSY 2.5 X 20M D/E FABRIC (NON RED)	Fabric Hose
FP01510/10	HOSE ASSY 2.5" X 20M S/E FABRIC (RED)	Fabric Hose
FP01510/10A	HOSE ASSY 2.5" X 20M S/E FABRIC (NON RED)	Fabric Hose
FP01510/11	HOSE ASSY 2.5 X 15M S/E FABRIC (RED)	Fabric Hose
FP01510/11A	HOSE ASSY 2.5 X 15M S/E FABRIC (NON RED)	Fabric Hose



Hose Assemblies - Fabric 3"- 3.5"

SPARE PARTS & CONSUMABLES

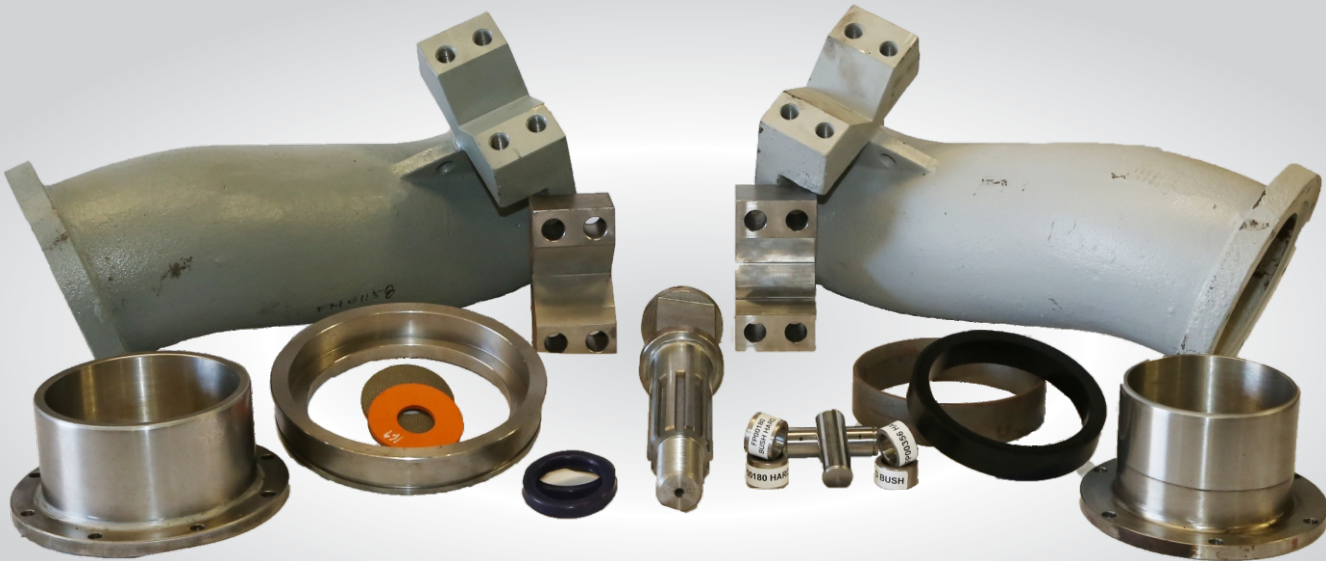
Part No.	Part Name / Description	Remark
3"		
FP00223/7	HOSE ASSY 3" X 3M S/E FABRIC	
FP00223/15	HOSE ASSY 3" X 3M D/E FABRIC	
FP00223/1	HOSE ASSY 3" X 4M S/E FABRIC	
FP00223/9	HOSE ASSY 3" X 4M D/E FABRIC	
FP00223/6	HOSE ASSY 3" X 5M D/E FABRIC	
FP00223/8	HOSE ASSY 3" X 5M S/E FABRIC	
FP00223/3	HOSE ASSY 3" X 6M D/E FABRIC	
FP00223/2	HOSE ASSY 3" X 10M D/E FABRIC	
FP00223/4	HOSE ASSY 3" X 10M S/E FABRIC	
FP00223/11	HOSE ASSY 3" X 14M D/E FABRIC	
FP00223/5	HOSE ASSY 3" X 15M S/E FABRIC	
FP00223/10	HOSE ASSY 3" X 15M D/E FABRIC	
FP00223/12	HOSE ASSY 3" X 20M S/E FABRIC	
FP00223/14	HOSE ASSY 3" X 20M D/E FABRIC	
3.5" (Continued over page)		
FP00226/4	HOSE ASSY 3.5" X 3M S/E FABRIC	REDUCING IN TAIL
FP00226/4A	HOSE ASSY 3.5" X 3M S/E FABRIC	NON REDUCING IN TAIL
FP00226/14	HOSE ASSY 3.5" X 3M DE FABRIC	REDUCING IN TAIL
FP00226/14A	HOSE ASSY 3.5" X 3M DE FABRIC	NON REDUCING IN TAIL
FP00226/10	HOSE ASSY 3.5" X 3.5M S/E FABRIC	REDUCING IN TAIL
FP00226/10A	HOSE ASSY 3.5" X 3.5M S/E FABRIC	NON REDUCING IN TAIL
FP00226/1	HOSE ASSY 3.5" X 4M D/E FABRIC	REDUCING IN TAIL
FP00226/1A	HOSE ASSY 3.5" X 4M D/E FABRIC	NON REDUCING IN TAIL
FP00226/2	HOSE ASSY 3.5" X 4M S/E FABRIC	REDUCING IN TAIL
FP00226/2A	HOSE ASSY 3.5" X 4M S/E FABRIC	NON REDUCING IN TAIL
FP00226/12	HOSE ASSY 3.5" X 4.5M D/E FABRIC	REDUCING IN TAIL
FP00226/12A	HOSE ASSY 3.5" X 4.5M D/E FABRIC	NON REDUCING IN TAIL
FP00226/7	HOSE ASSY 3.5" X 5M S/E FABRIC	REDUCING IN TAIL
FP00226/7A	HOSE ASSY 3.5" X 5M S/E FABRIC	NON REDUCING IN TAIL
FP00226/8	HOSE ASSY 3.5" X 5M D/E FABRIC	REDUCING IN TAIL
FP00226/8A	HOSE ASSY 3.5" X 5M D/E FABRIC	NON REDUCING IN TAIL



Swinger Rams, Minor Links, and Outlet Seal Housings

SPARE PARTS & CONSUMABLES

Part No.	Part Name / Description	Remark
Swinger Rams		
FM00824	Swinger Ram Cylinder Complete - Mark 1	Fc636
FM00935	Swinger Ram Cylinder Complete - Mark 2	FC636
FP00384	Swinger Ram Cylinder Complete	FC748H, FC636H & FC433H
FP00949	Swinger Ram Cylinder Complete	FC848, FC860 & FC872
Minor Links		
FM00022	Single Hard Bush Type	Suits FM00436 & FM00503 Spline Shafts
FM00111	Four (4) Hard Bush Type	Suits FM00112 Spline Shaft
FM00454	For FM00436	Suits FC748
Hard Bush		
FP00180	1.3/8" x 1" x 1"	
FP00181	1.3/4" x 1" x 11/4"	
FP00356	1.3/4" x 1" x 3/4"	
FP00376	1.3/8" x 1" x 5/8"	
Pins		
FM01108	1" x 83	
FM00465	1" x 71.5	
FM00144	1" x 92	
FM00050	1.1/4" x 88.9	
FM00061	1.1/4" x 110.9	
Clevis		
FM00507	Swinger Ram Mounting ye Plate	Suits FM00824 & FM00935
FM00466	Swinger Ram Mounting ye Plate	Suits FP00384
FM00344	Swinger Ram Mounting ye Plate	Suits FM00949
Linatex Seal		
FP00169	Agitator	
FP00354	6" Hopper Seal	
FP00371	8" Hopper Seal	
Outlet Seal Housing		
FM00286	5"Outlet Housing	
FM00062	6"Outlet Housing	
FM00680	7"Outlet Housing	



S'Pieces, Locators, Spline Shafts, Anti Chip Rings, Outlet Seals & Hopper Outlets

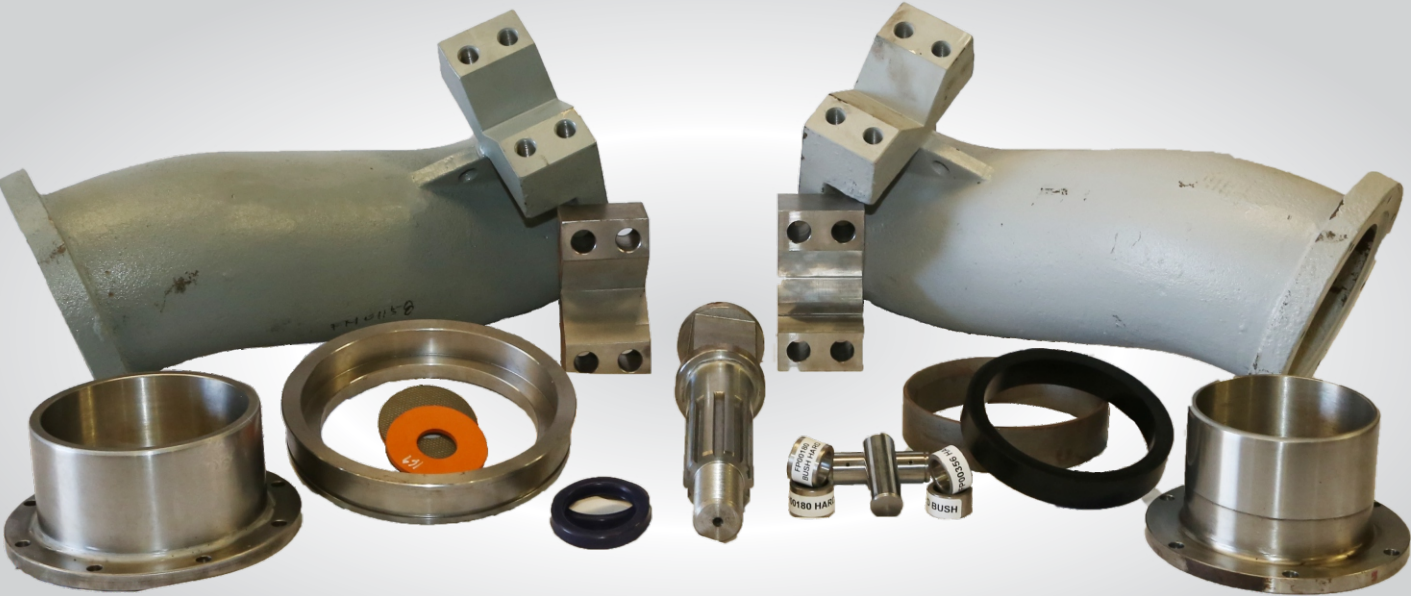
SPARE PARTS & CONSUMABLES

Part No.	Part Name / Description	Remark
S'Pieces		
FM00467	6" - 5" Cast	SUITS FC433 WITH 5" OUTLET
FM01158	6" - 6" Cast	SUITS FC748 WITH 6" OUTLET
FM00510	6" Cast	SUITS FC636 WITH 8" OUTLET
FM00600	7" Cast (Imperial)	SUITS FC748 WITH 7" OUTLET
FM00501	8" Cast	SUTIS FC848 WITH 6" OUTLET
Wear Ring Locator		
FM00125	6" Fab	SUITS FM00510
FM00448	6" Hardened	SUITS FM01158 & FM00467
FM00506	6" Cast	SUITS FM00510
FM00601	7" Normal	SUITS FM00600
FM00504	8" Cast	SUITS FM00501
Spline Shafts		
FM00436	Spline Shaft	SUITS FM00467 & FM01158
FM00112	Spline Shaft	SUITS FM00510
FM00503	Spline Shaft	SUITS FM00501 & FM00600
Anti - Chip Rings		
FM00113	6" Hardened	
FM00052	7" Hardened	
FM00053	8" Hardened	
Chromed Outlets		
FM00201	5"	
FM00502	6"	
FM00731	7"	
Outlet Seals		
FP00025	5"	
FP00082	6"	
FP00578	7"	
Hopper Outlets		
FM00461	5"	
FM00033	6"	
FM00748	7"	

Hose Assemblies - Fabric 3.5"- 4"

SPARE PARTS & CONSUMABLES

Part No.	Part Name / Description	Remark
3.5" Continued		
FP00226/6	HOSE ASSY 3.5" X 6M S/E FABRIC	REDUCING IN TAIL
FP00226/6A	HOSE ASSY 3.5" X 6M S/E FABRIC	NON REDUCING IN TAIL
FP00226/9	HOSE ASSY 3.5" X 6M D/E FABRIC	REDUCING IN TAIL
FP00226/9A	HOSE ASSY 3.5" X 6M D/E FABRIC	NON REDUCING IN TAIL
FP00226/15	HOSE ASSY 3.5" X 7M D/E FABRIC	REDUCING IN TAIL
FP00226/15A	HOSE ASSY 3.5" X 7M D/E FABRIC	NON REDUCING IN TAIL
FP00226/3	HOSE ASSY 3.5" X 10M S/E FABRIC	REDUCING IN TAIL
FP00226/3A	HOSE ASSY 3.5" X 10M S/E FABRIC	NON REDUCING IN TAIL
FP00226/5	HOSE ASSY 3.5" X 10M D/E FABRIC	REDUCING IN TAIL
FP00226/5A	HOSE ASSY 3.5" X 10M D/E FABRIC	NON REDUCING IN TAIL
FP00226/11	HOSE ASSY 3.5" X 15M S/E FABRIC	REDUCING IN TAIL
FP00226/11A	HOSE ASSY 3.5" X 15M S/E FABRIC	NON REDUCING IN TAIL
FP00226/13	HOSE ASSY 3.5" X 20M DE FABRIC	REDUCING IN TAIL
FP00226/13A	HOSE ASSY 3.5" X 20M DE FABRIC	NON REDUCING IN TAIL
FP00226/16	HOSE ASSY 3.5" X 20M S/E FABRIC	REDUCING IN TAIL
FP00226/16A	HOSE ASSY 3.5" X 20M S/E FABRIC	NON REDUCING IN TAIL
4"		
FP00224/5	HOSE ASSY 4"X 2M D/E FABRIC	
FP00224/2	HOSE ASSY 4"X 3M S/E FABRIC	
FP00224/6	HOSE ASSY 4" X 3M D/E FABRIC	
FP00224/1	HOSE ASSY 4" X 4M S/E FABRIC	
FP00224/8	HOSE ASSY 4" X 4M D/E FABRIC	
FP00224/3	HOSE ASSY 4" X 5M D/E FABRIC	
FP00224/4	HOSE ASSY 4" X 5M S/E FABRIC	
FP00224/7	HOSE ASSY 4" X 10M S/E FABRIC	
FP00224/13	HOSE ASSY 4" X 10M D/E FABRIC	
FP00224/9	HOSE ASSY 4" X 15M S/E FABRIC	
FP00224/14	HOSE ASSY 4" X 20M D/E FABRIC	



Hose Assemblies - Steel 2"- 2.5"

SPARE PARTS & CONSUMABLES

Part No.	Part Name / Description	Remark
2"		
FP01369/1	HOSE ASSY 2" X 4M S/E STEEL	
FP01369/8	HOSE ASSY 2" X 5M D/E STEEL	
FP01369/9	HOSE ASSY 2" X 5M S/E STEEL	
FP01369/3	HOSE ASSY 2" X 10M D/E STEEL	
FP01369/4	HOSE ASSY 2" X 10M S/E STEEL	
FP01369/5	HOSE ASSY 2" X 20M D/E STEEL	
FP01369/6	HOSE ASSY 2" X 20M S/E STEEL	
2.5"		
FP00714/4	HOSE ASSY 2.5" X 4M S/E STEEL	REDUCING IN TAIL
FP00714/4A	HOSE ASSY 2.5" X 4M S/E STEEL	NON REDUCING IN TAIL
FP00714/6	HOSE ASSY 2.5" X 5M S/E STEEL	REDUCING IN TAIL
FP00714/6A	HOSE ASSY 2.5" X 5M S/E STEEL	NON REDUCING IN TAIL
FP00714/5	HOSE ASSY 2.5" X 5M D/E STEEL	REDUCING IN TAIL
FP00714/5A	HOSE ASSY 2.5" X 5M D/E STEEL	NON REDUCING IN TAIL
FP00714/7	HOSE ASSY 2.5" X 10M S/E STEEL	REDUCING IN TAIL
FP00714/7A	HOSE ASSY 2.5" X 10M S/E STEEL	NON REDUCING IN TAIL
FP00714/1	HOSE ASSY 2.5" X 10M D/E STEEL	REDUCING IN TAIL
FP00714/1A	HOSE ASSY 2.5" X 10M D/E STEEL	NON REDUCING IN TAIL
FP00714/9	HOSE ASSY 2.5" X 20M S/E STEEL	REDUCING IN TAIL
FP00714/9A	HOSE ASSY 2.5" X 20M S/E STEEL	NON REDUCING IN TAIL
FP00714/8	HOSE ASSY 2.5" X 20M D/E STEEL	REDUCING IN TAIL
FP00714/8A	HOSE ASSY 2.5" X 20M D/E STEEL	NON REDUCING IN TAIL

Wear Rings

SPARE PARTS & CONSUMABLES

Part No.	Part Name / Description	Remark
Flowcrete		
FM00115T	6"	Tungsten non reversible
FM00195	7"	Chromium Carbide non reversible
FM00037T	8"	Tungsten non reversible
Jacon / Transcrete		
FM00260T	6"	Tungsten non reversible
Schwing		
FP01915	7"	Chromium Carbide non reversible
FM01207	8"	Chromium Carbide non reversible
Powercrete		
FM01211	8"	Chromium Carbide non reversible
FP01647	9"	Chromium Carbide non reversible
JunJin / Putzmeister		
JJ032304	7"	Chromium Carbide non reversible
JJ012304	8"- 3x Step Rear or S Piece & Thrust Ring Fitment (New Style)	Chromium Carbide non reversible
JJ01239300	8" Junjin Genuine	Tungsten non reversible
JJ182304	8" High Pressure (Tungsten Inlay) O Ring Sealed	Tungsten non reversible
FM01213	8" C - Valve	Chromium Carbide non reversible
JJ012397	Big Mouth - VERSION 1 Junjin Genuine	Tungsten non reversible
JJ202304	Big Mouth - VERSION 2 Junjin Genuine	Tungsten non reversible
NON OEM		
JJ012393/C30	8" (30,000m3) NON OEM	Tungsten non reversible
JJ012397C30	Big Mouth (30,000m3) - VERSION 1 NON OEM	Tungsten non reversible
JJ202304C30	Big Mouth (30,000m3) - VERSION 2 NON OEM	Tungsten non reversible
Callaghan		
FM01209	8"	Chromium Carbide non reversible
Sermac		
FP00999	8"	Chromium Carbide non reversible
Cifa		
FP00963	8"	Chromium Carbide non reversible



Wear Plates

SPARE PARTS & CONSUMABLES

Part No.	Part Name / Description	Remark
Flowcrete		
FM00439T	6" (433,748 & 748H) Kidney Shape	Tungsten Non Reversible
FM00039T	7"	Tungsten Non Reversible
FM00049	8"	Chromium Carbide non reversible
FM00049T	8"	Tungsten Non Reversible
Jacon / Transcrete		
FM00192T	6"Wear Plate	Tungsten Non Reversible
FM02369T	6" 2 Bolt + 2 Counter Screw Fitment	Tungsten Non Reversible
Schwing		
FP01914	7"	Chromium Carbide non reversible
FM01206	8"	Chromium Carbide non reversible
Powercrete		
FM01210	8"	Chromium Carbide non reversible
FP01646	9"	Chromium Carbide non reversible
JunJin / Putzmeister		
JJ032303	7"	Chromium Carbide non reversible
JJ012303	8"	Chromium Carbide non reversible
JJ01239200	8" Junjin Genuine	Tungsten non reversible
FM01212	8" C-Valve	Chromium Carbide non reversible
JJ012398	Big Mouth - VERSION 1 (34.5MM) Junjin Genuine	Tungsten non reversible
JJ202303	Big Mouth - VERSION 2 (25MM) Junjin Genuine	Tungsten Non Reversible
NON OEM		
JJ012392/C30	8" (30,000m3) NON OEM	Tungsten Non Reversible
JJ012398/C30	Big Mouth (30,000m3) -VERSION 1 (34.5MM) NON OEM	Tungsten Non Reversible
JJ202303/C30	Big Mouth (30,000m3) -VERSION 2 (25MM) NON OEM	Tungsten Non Reversible
Callaghan		
FM01208	8" (2 x 1/2 Plate)	Chromium Carbide non reversible
Sermac & Cifa		
FP00919	8"	Chromium Carbide non reversible
FP00919C	8"	Tungsten Non Reversible
FP00974	8"	Chromium Carbide non reversible

Hose Assemblies - Steel 3"- 4"

SPARE PARTS & CONSUMABLES

Part No.	Part Name / Description	Remark
3"		
FP01370/1	HOSE ASSY 3" X 4M S/E STEEL	
FP01370/2	HOSE ASSY 3" X 6M D/E STEEL	
FP01370/3	HOSE ASSY 3" X 10M S/E STEEL	
FP01370/4	HOSE ASSY 3" X 10M D/E STEEL	
FP01370/5	HOSE ASSY 3" X 5M S/E STEEL	
FP01370/6	HOSE ASSY 3" X 15M S/E STEEL	
3.5"		
FP00506/01	HOSE ASSY 3.5" X 4M S/E STEEL (RED)	REDUCING IN TAIL
FP00506/01A	HOSE ASSY 3.5" X 4M S/E STEEL (NON RED)	NON REDUCING IN TAIL
FP00506/2	HOSE ASSY 3.5" X 10M S/E STEEL (RED)	REDUCING IN TAIL
FP00506/2A	HOSE ASSY 3.5" X 10M S/E STEEL (NON RED)	NON REDUCING IN TAIL
FP00506/3	HOSE ASSY 3.5" X 10M D/E STEEL (RED)	REDUCING IN TAIL
FP00506/3A	HOSE ASSY 3.5" X 10M D/E STEEL (NON RED)	NON REDUCING IN TAIL
FP00506/4	HOSE ASSY 3.5" X 5M S/E STEEL (RED)	REDUCING IN TAIL
FP00506/4A	HOSE ASSY 3.5" X 5M S/E STEEL (NON RED)	NON REDUCING IN TAIL
FP00506/5	HOSE ASSY 3.5" X 15M D/E STEEL (RED)	REDUCING IN TAIL
FP00506/5A	HOSE ASSY 3.5" X 15M D/E STEEL (NON RED)	NON REDUCING IN TAIL
FP00506/6	HOSE ASSY 3.5" X 15M 20M D/E STEEL (RED)	REDUCING IN TAIL
FP00506/6A	HOSE ASSY 3.5" X 15M 20M D/E STEEL (NON RED)	NON REDUCING IN TAIL
4"		
FP01371/1	HOSE ASSY 4" X 4M S/E STEEL	
FP01371/2	HOSE ASSY 4" X 4M D/E STEEL	
FP01371/3	HOSE ASSY 4" X 5M S/E STEEL	
FP01371/4	HOSE ASSY 4" X 5M D/E STEEL	
FP01371/5	HOSE ASSY 4" X 10M S/E STEEL	
FP01371/6	HOSE ASSY 4" X 10M D/E STEEL	
FP01371/7	HOSE ASSY 4" X 3M D/E STEEL	
FP01371/8	HOSE ASSY 4" X 3M S/E STEEL	
FP01371/9	HOSE ASSY 4" X 12M S/E STEEL	



Dongyang Boom Pipeline Parts

SPARE PARTS & CONSUMABLES

Part No.	Part Name / Description	Remark
	Suit Both FC21MZX-4 & FC25MZX-4 Units	
D42P0107	4" Bolt Clamp - Cast Wide Type	
FP01853	4" Rubber Gasket With Sealing Inner Lip- Wide Suit D42P0107	
D43P011303	4" x 90' Cast Boom Elbow (350mm Radius)	Standard Boom 90' Bend
D44P021100	4" x 90' Cast Boom Elbow (250mm Radius)	Drop Hose 90' Elbow
	Specific FC21MZX-4 Parts	
D44P0202	4" x 545mm Intermediate Pipe Stage 1 & 2	
D44P0203	4" x 390mm Intermediate Pipe Stage 2 & 3	
D44P0205	4" x 337mm Intermediate Pipe Stage 3 & 4	
D44P020700	4" x 90' Bend With 6 Bolt Flange - King Post Top Outlet	
D44P020800	4" x 499mm Pipe With Offset Ends -Next One Under D44P0207	
D44P020900	4" Bent Pipe Assy - Next One Under D44P0208	
D44P021000	4" x Extended 90' Pipe Assy. - King Post Entry Pipe	
	Specific FC25MZX-4 Parts	
D44P0202	4" x 545mm Intermediate Pipe Stage 1 & 2	
D35P020400	4" x 400mm Intermediate Pipe Stage 2 & 3	
D35P0206	4" x 330mm Intermediate Pipe Stage 3 & 4	
D35P020800	4" x 90' Bend With 6 Bolt Flange - King Post Top Outlet	
D35P020900	4" Bent Pipe Assy - Next One Under D35P0208	
D35P021000	4" Bent Pipe Assy - Next One Under D35P0209	
D44P021100	4" x 90' Cast Elbow (250mm R) - King Post Entry Pipe	

Spray Guns, Hoses & Accessories

SPARE PARTS & CONSUMABLES

Part No.	Part Name / Description	Remark
	Spray Guns & Parts	
FP00130	Spray Gun Complete (Long) with Rubber Nozzle Tip	Steel
FP00130/2	Spray Gun Complete (Long) with Rubber Nozzle Tip	Alloy
FP00130/1	Spray Gun Complete (Short) with Rubber Nozzle Tip	Steel
FM00161	Spray Gun Insert Long	
FM00162	Spray Body (Air Ring) - Aluminium	
FP00793	Nozzle Tip Rubber	
FP00122	Nozzle Tip Poly	
FP01375	Locking Nut - Steel	
FM00163	Locking Nut - Aluminium	
FM01269	Washer - O Ring Retainer (2 x Required)	
FP00006	O Ring For Air Ring (2 x Required)	
FP01302	3/8 x 90' Steel Bend	
FP01225	3/8 Ball Valve	
FP00903	3/8 Air Connector	
FP01301	W/Drive Clamp (Nozzle)	
	Spray Gun/Hose Adaptors	
FP02100	2" F Adaptor Hose Tail	Converts a standard hose to a spray hose
FP01743	2" M Adaptor Hose Tail	Converts a spray hose to a standard hose
	Spray Hose Assemblies	
FP00222/1	HOSE ASSY 2" X 10M SPRAY FABRIC	Fabric Hose
FP00222/2	HOSE ASSY 2" X 20M SPRAY FABRIC	Fabric Hose
FP00222/6	HOSE ASSY 2" X 3M SPRAY FABRIC	Fabric Hose
FP00222/7	HOSE ASSY 2" X 7M SPRAY FABRIC	Fabric Hose
FP00222/12	HOSE ASSY 2" X 15M SPRAY FABRIC	Fabric Hose
FP00222/13	HOSE ASSY 2" X 5M SPRAY FABRIC	Fabric Hose
FP00222/14	HOSE ASSY 2" X 13M SPRAY FABRIC	Fabric Hose
FP01369/7	HOSE ASSY 2" X 20M SPRAY STEEL	Steel Hose
FP01369/2	HOSE ASSY 2" X 10M SPRAY STEEL	Steel Hose

