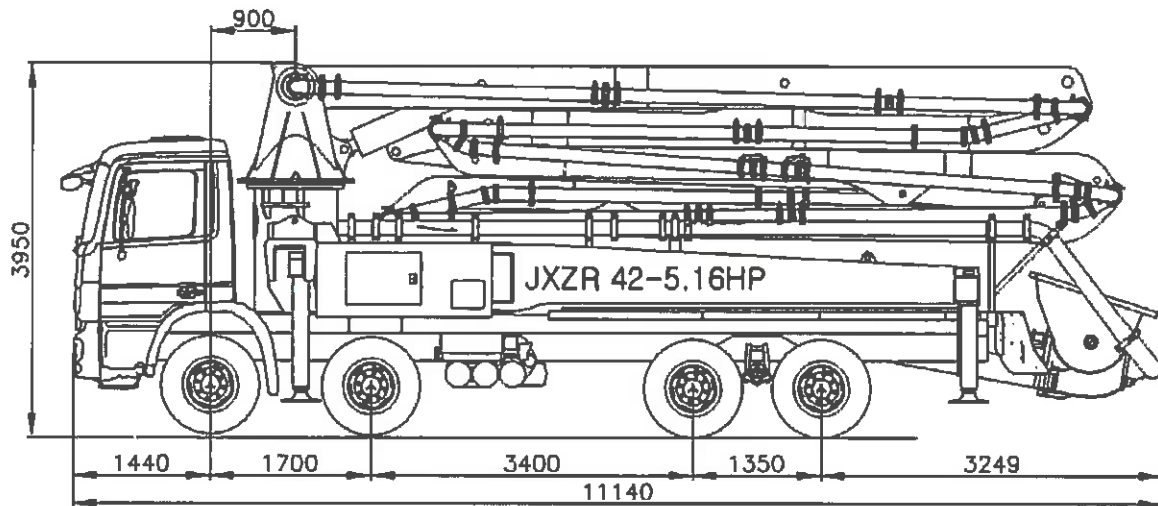
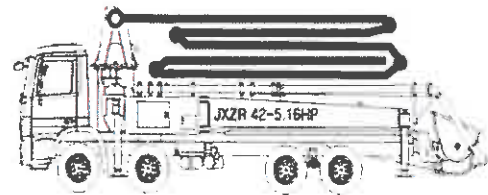


DATA SHEET

TRUCK MOUNTED BOOM PUMP

**JXZR42-5.16HP**

**42M Truck Mounted Boom Pump
with 160m³/h Output & Z-Roll Boom Design**

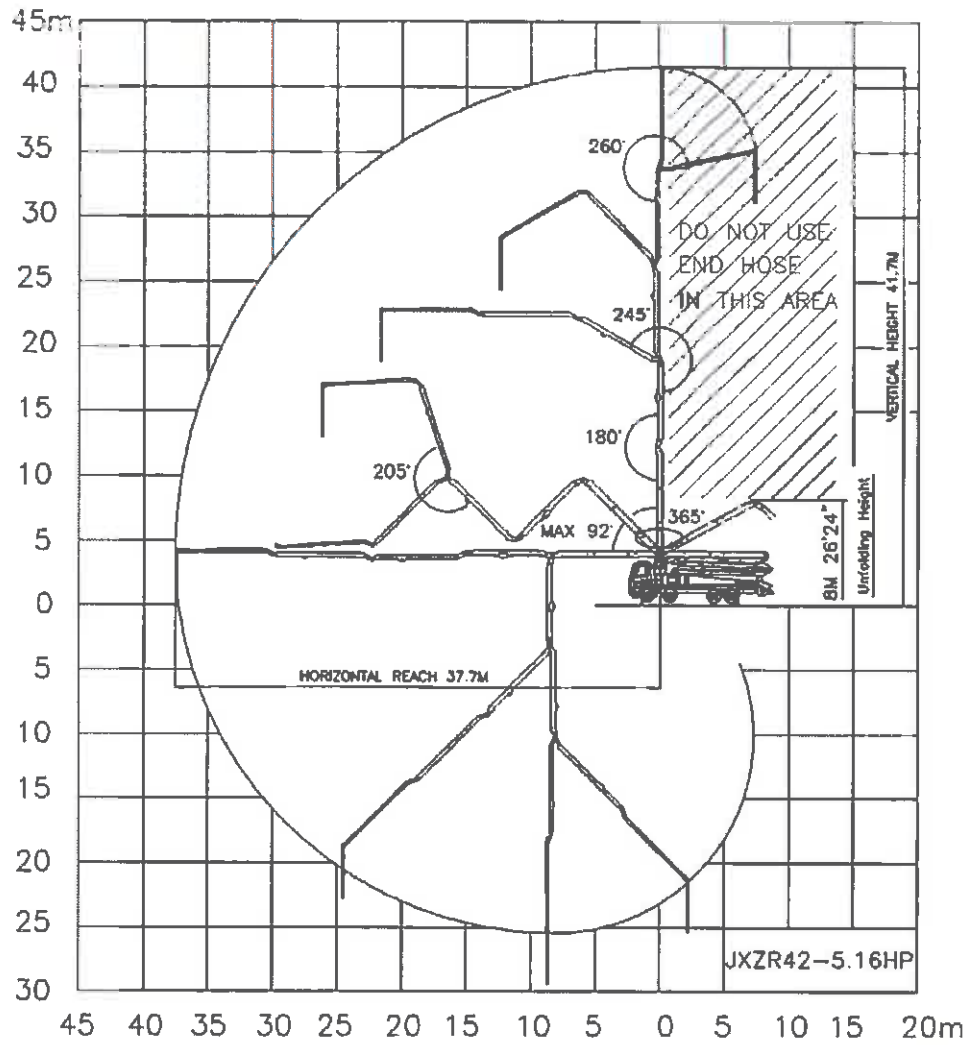


Remark: Standard specification with MB 4141. Dimension depends on truck specification.

■ TECHNICAL SPECIFICATION

General Specification		Pump Specification			Boom Specification	
Delivery Line	DN 125 / 5"	Output	Rod	158 m ³ /h	Number of Booms	5 Sections
Radio Remote	Proportional Control		Piston	98 m ³ /h	Folding Type	Z & Roll
Wear Plate / Ring	Tungsten Carbide	Pressure	Rod	72 Bar	Vertical Height	41.7 m
Water Pump	20 Bar		Piston	115 Bar	Horizontal Reach	37.7 m
Water Tank	500 Liter	Delivery Cylinder (Hard-chromed)	∅230 mm		Unfolding Height	8.0 m
Auto Lubrication	Hyd. greaser, Hopper	Stroke Length	2100 mm		End-Hose Length	4.0 m
		S-Valve	8" x 7"		1st Section	8.3 m
		Main Oil Pump	Rexroth Hydromatik		2nd Section	6.8 m
		System Pressure	350 Bar		3rd Section	7.2 m
		Switching Type	Hydraulic		4th Section	7.7 m
		Hopper Capacity	600 Liter		5th Section	7.7 m

■ BOOM WORKING DIAGRAM



■ OUTRIGGER SPAN

