



2012-08-23 VER.2

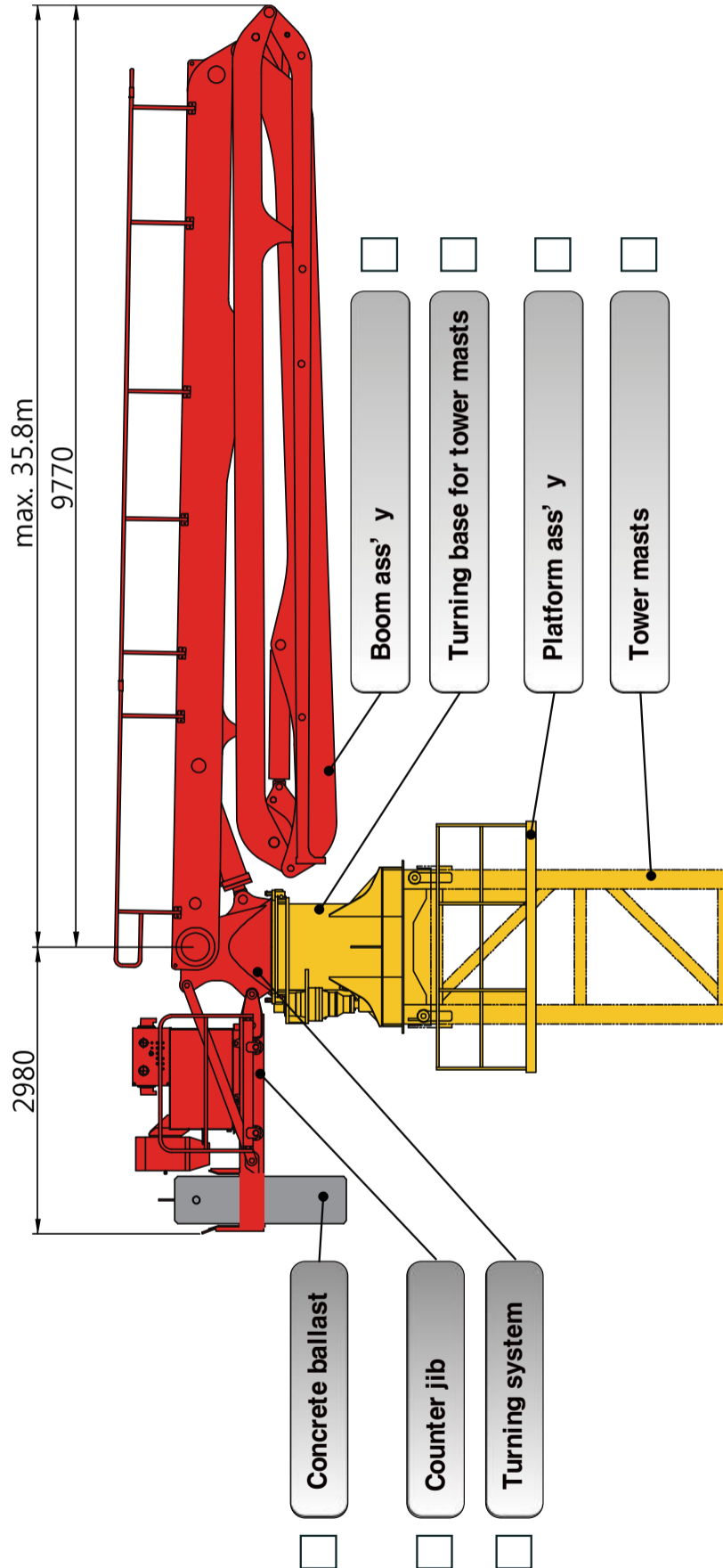
DATA SHEET

PLACING BOOM



JB-T36H

Placing System on Tower Mast 36M 4 Sections R & Fold Designed Boom



* All technical data are theoretical values and Specification are subject to change without prior notice.
 * JUNJIN HEAVY INDUSTRY CO.LTD 33 OSEONRI GEUMWANGUEP EUMSEONGGUN CHUNBUK, KOREA WWW.JUNJIN.COM



2012-08-23 VER.2

DATA SHEET

PLACING BOOM



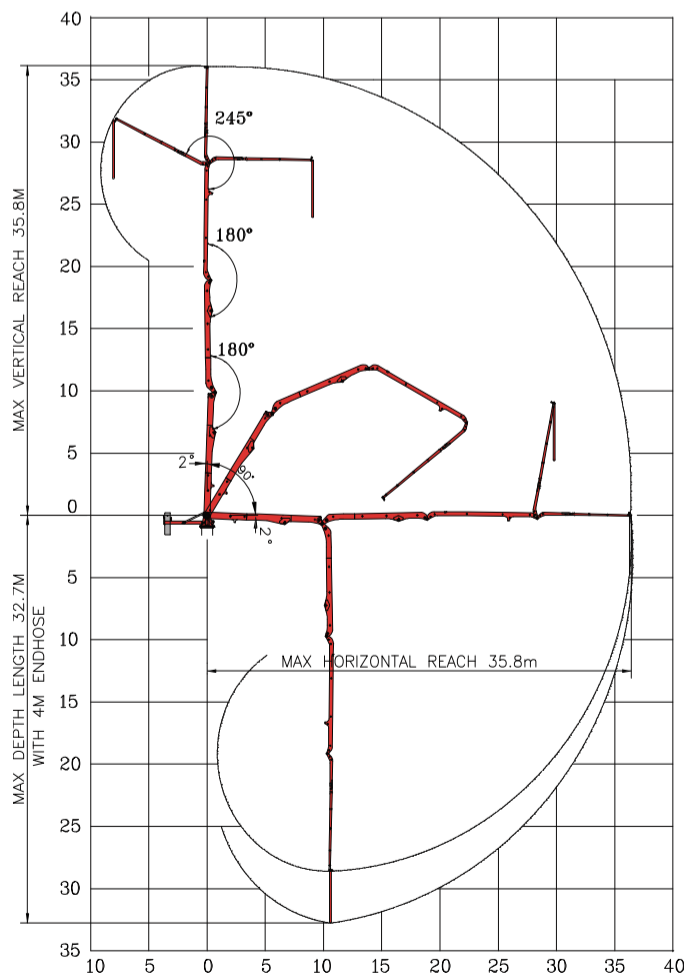
JB-T36H

Placing System on Tower Mast
36M 4 Sections R & Fold Designed Boom

■ Boom Specification / Technical Specification

| | | | | | |
|------------------|-------------|----------|-------------------|-------------|--------------------|
| Boom Design | | R & Fold | | | |
| Horizontal Reach | | 35.8m | Boom Articulation | 1st Section | 91° |
| Vertical Reach | | 35.8m | | 2nd Section | 180° |
| Reach Depth | | 32.7m | | 3rd Section | 180° |
| | | | | 4th Section | 245° |
| Boom Length | 1st Section | 9.3m | Rotation | | 365° |
| | 2nd Section | 8.5m | Delivery Line | | DN 125mm(5") |
| | 3rd Section | 8.9m | Electric System | | AC380V / 60Hz |
| | 4th Section | 9.1m | Control Systems | | Radio-Cable-Manual |
| End Hose Length | | 4.0m | | | |

■ Working Diagram



* All technical data are theoretical values and Specification are subject to change without prior notice.

* JUNJIN HEAVY INDUSTRY CO.LTD 33 OSEONRI GEUMWANGU EUMSEONGGUN CHUNBUK, KOREA WWW.JUNJIN.COM



2012-08-23 VER.2

DATA SHEET

PLACING BOOM

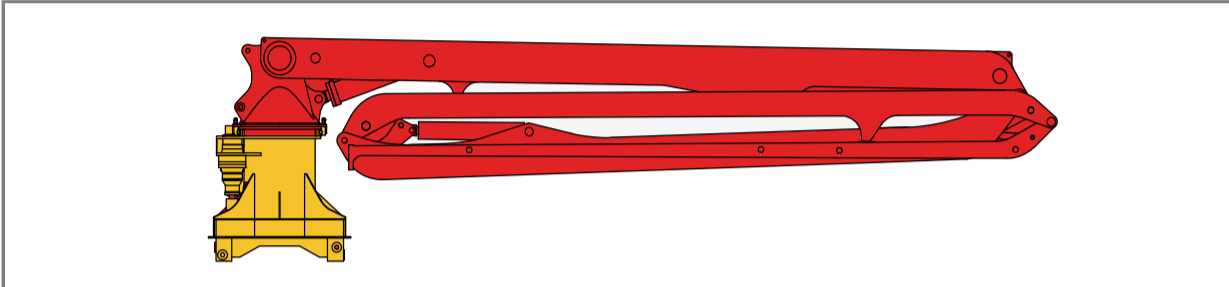


JB-T36H

Placing System on Tower Mast
36M 4 Sections R & Fold Designed Boom

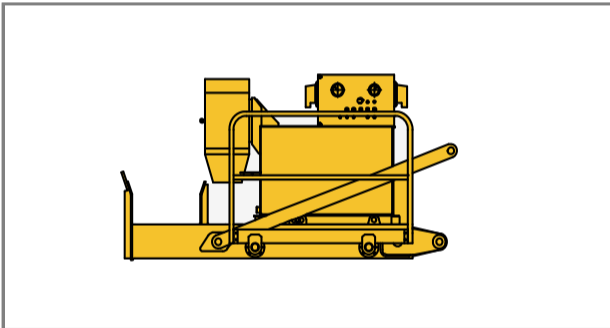
Standard delivery Scope

▷ Boom ass'y & Turning base



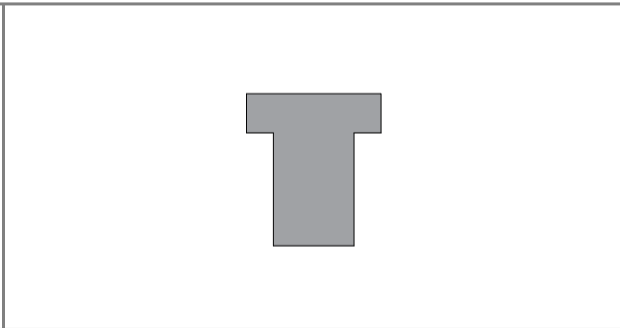
- Weight: 8,920 kg

Counter Jib



- Weight : 1,000 kg

▷ Ballast weight



- Weight : 2,100 kg

* All technical data are theoretical values and Specification are subject to change without prior notice.
* JUNJIN HEAVY INDUSTRY CO.LTD 33 OSEONRI GEUMWANGEUP EUMSEONGGUN CHUNBUK, KOREA WWW.JUNJIN.COM