

JUNJIN CONCRETE PUMP SERVICE INFORMATION



JSI - EN - 05 - 6E - 001		Date	Feb 1st, 2005
Total Pages	2	Present Page	1
Written by	HAN SEONG, SEOL	Approved by	IN JAE, HWANG
Subject	Replacement of outrigger check valve		

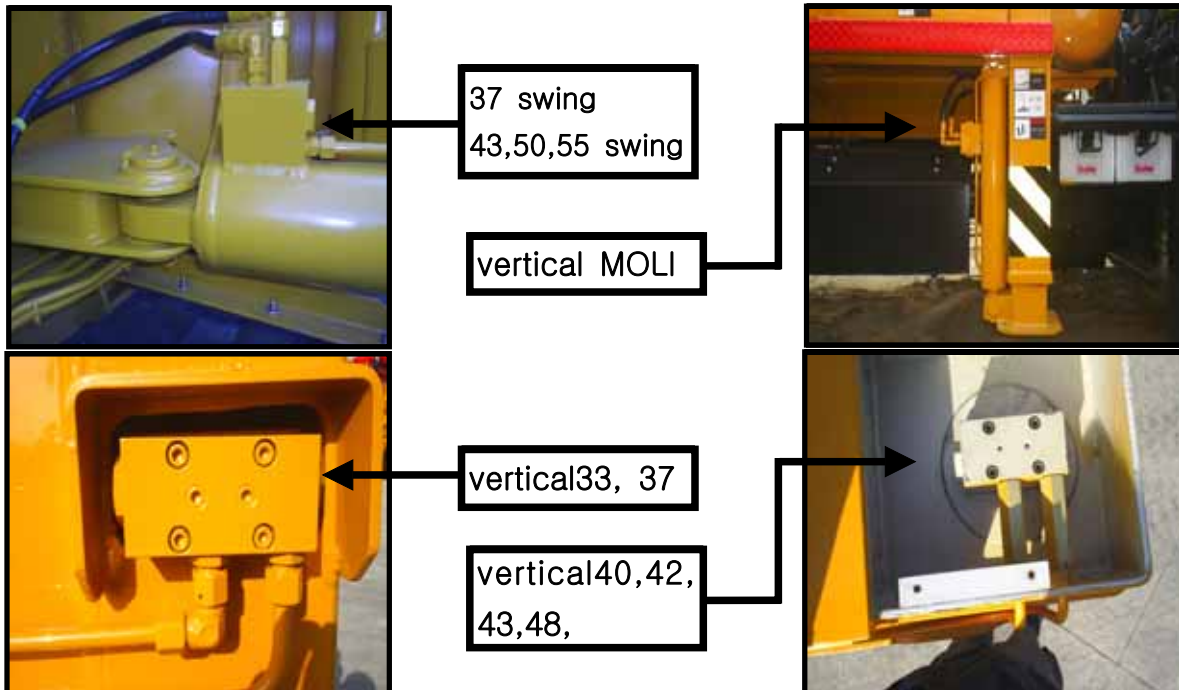
■ Replacement of outrigger check valve

① operate the outrigger and installed to the ground slowly.



② It release a fixed bolt of check valve slowly and it puts out (O-ring could be damaged)

③ Disassemble and it replace check valve, assemble in reverse order of disassemble.



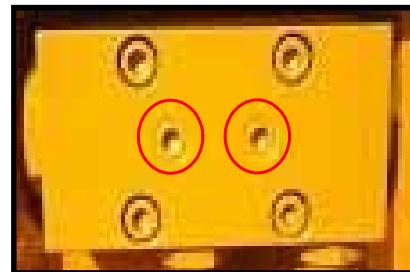
JUNJIN CONCRETE PUMP SERVICE INFORMATION



JSI - EN - 05 - 6E - 001		Date	Feb 1st, 2005
Total Pages	2	Present Page	2
Written by	HAN SEONG, SEOL	Approved by	IN JAE, HWANG
Subject	Replacement of outrigger check valve		

■ Replacement of outrigger check valve

- ① The check valve function is installed each in P line and T line of the outrigger vertical cylinder and the swing cylinder which is supported to the cylinder load enough.
- ② When the vertical cylinder and the swing cylinder is loaded, if the actual condition which appear to hang down it must inspect the function loss this check valve.
- ③ Check valve production hour it follow in the method which it close hole it come to share in 2 types of expander type and ball type. In the case of spherical ball type the ball will fall in and leaking hydraulic oil become troublesome after welding with temporary expedient, it replace with expander type.



bolt type



outrigger check v/v disassembly and expander type check v/v.