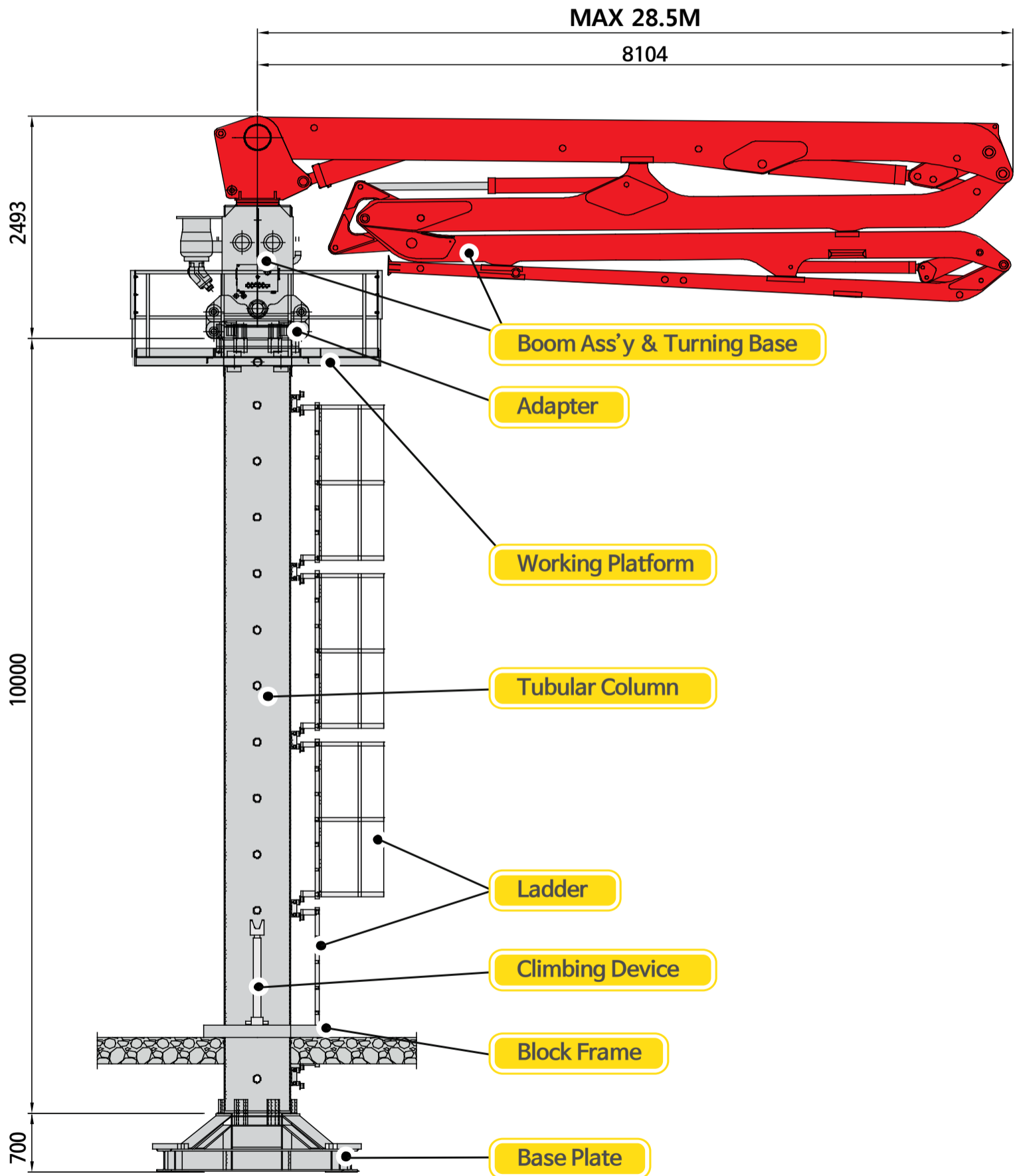


JB-Z29H

DATA SHEET PLACING BOOM



Placing System on 4 Sections Z TYPE Designed Boom



* All technical data are theoretical values and Specification are subject to change without prior notice.
* www.junjn.com

JB-Z29H

DATA SHEET PLACING BOOM

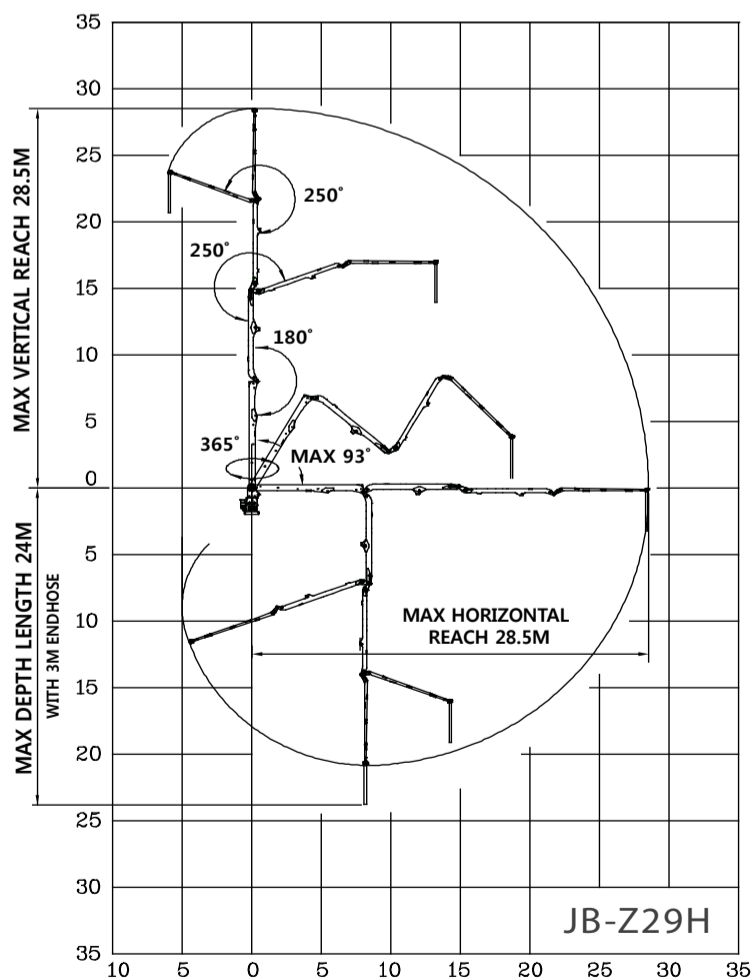


Placing System on 4 Sections Z TYPE Designed Boom

Boom Specification / Technical Specification

SPECIFICATION			SPECIFICATION		
Boom Design	Z TYPE		Boom Articulation	1st Section	-3°~90°
Horizontal Reach	28.5m			2nd Section	180°
Vertical Reach	28.5m			3rd Section	250°
Reach Depth	24m			4th Section	250°
Boom Length	1st Section	8m	Rotation	365°	
	2nd Section	6.9m	Delivery Line	DN 125mm(5")	
	3rd Section	6.8m	Electric System	AC380V / 60Hz	
	4th Section	6.8m	Control Systems	Radio-Cable-Manual	
End Hose Length	3.0m		Electric Motor	15KW	

WORKING DIAGRAM



* All technical data are theoretical values and Specification are subject to change without prior notice.
 * www.junjin.com

JB-Z29H

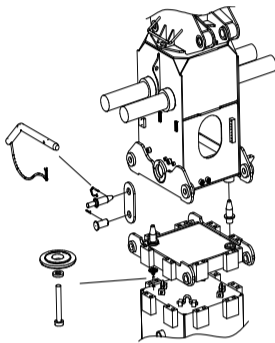
DATA SHEET PLACING BOOM



Placing System on 4 Sections Z TYPE Designed Boom

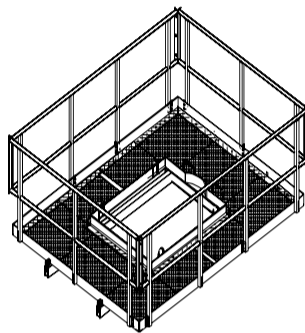
Standard delivery Scope

▶ Turning Base & Adapter



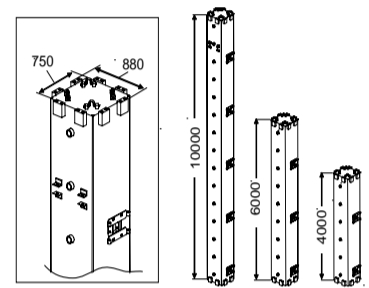
- Turing Base:1Set
- Adapter:1Set

▶ Working Platform



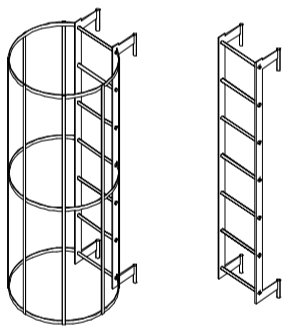
- Safety platform : 1Set

▶ Tubular Column



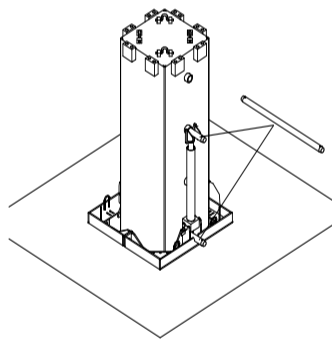
- 10m Tubular Column:2EA
- 4m,6m Tubular Column:options

▶ Ladder



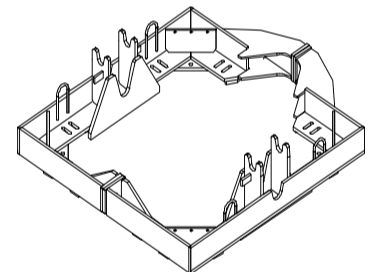
- Ladder with rear protection:3EA
- Ladder without protection:1EA

▶ Climbing Device



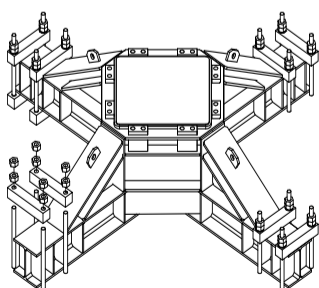
- Climbing Device:1Set

▶ Block Frame



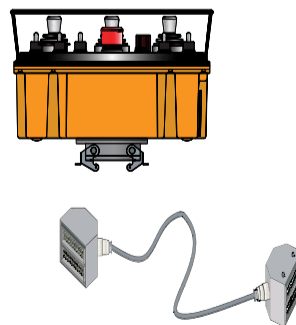
- Block Frame:3EA

▶ Base Frame



- Base Frame:1EA

▶ Remote Control



- Cable Remote Control:1Set
- Wireless remote control(option)

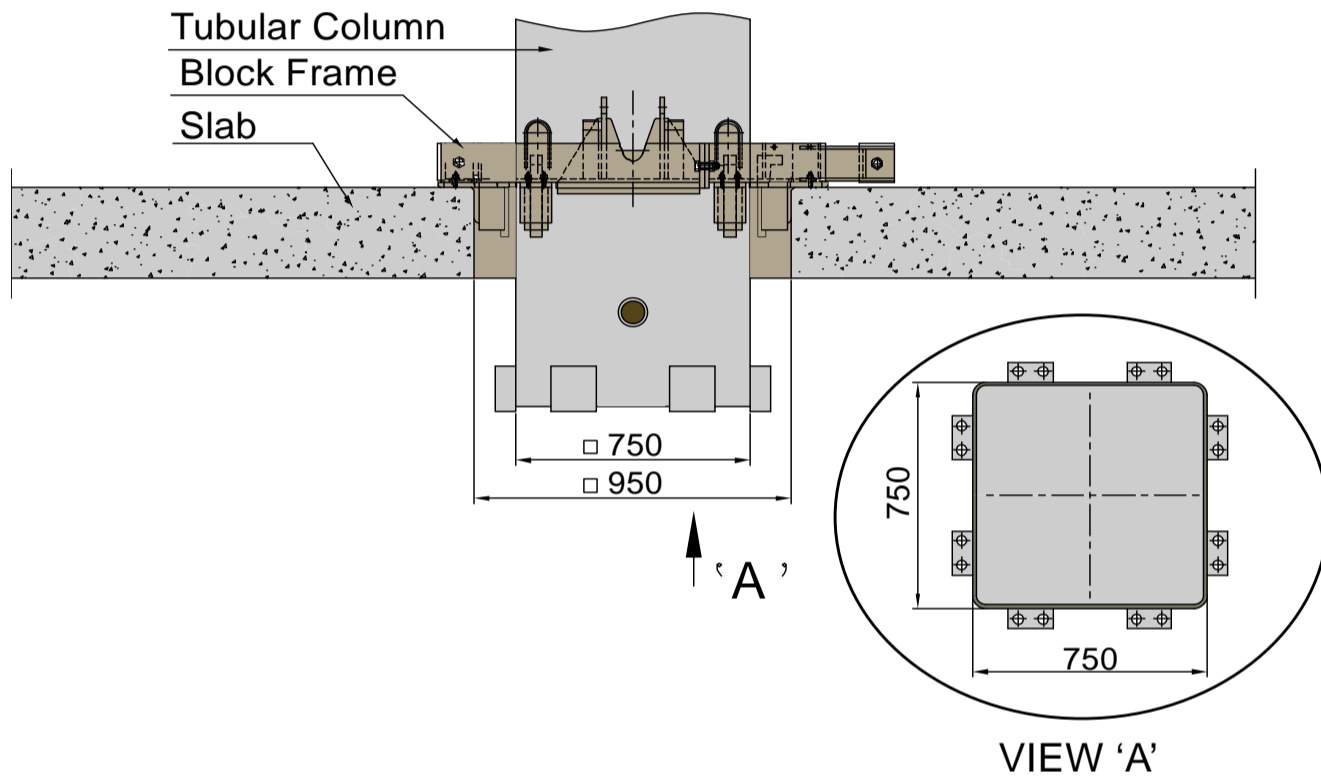
JB-Z29H

DATA SHEET PLACING BOOM

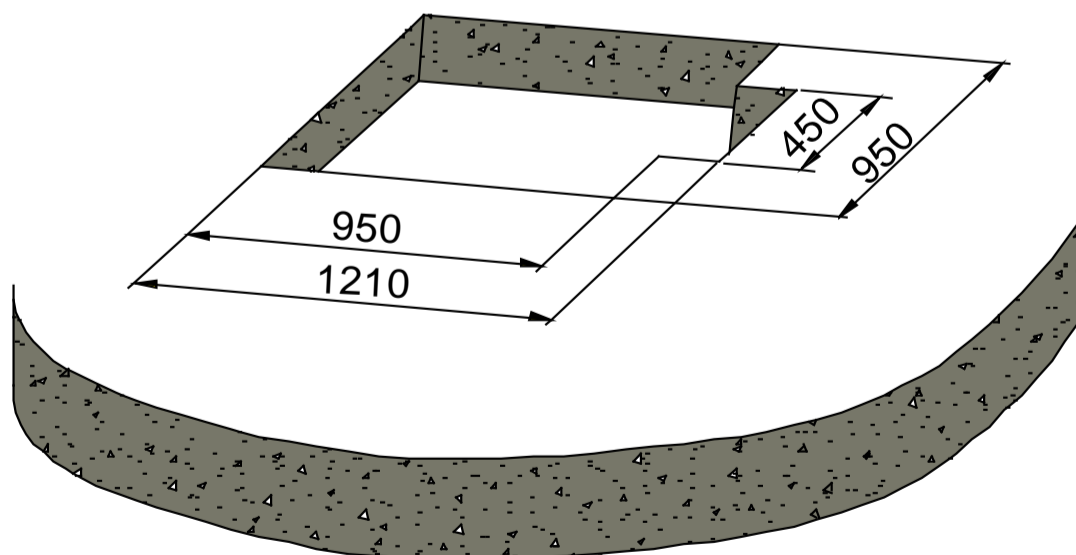


Placing System on 4 Sections Z TYPE Designed Boom

How to support on Slab



Slab Open Hole Size



* All technical data are theoretical values and Specification are subject to change without prior notice.
* www.junjin.com